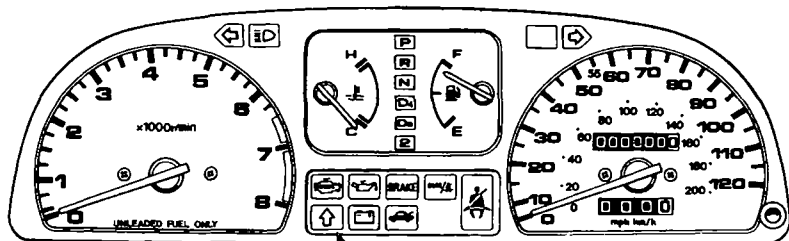


Warning and Indicator Lights



(HF—except cars sold
in California)



Economy Driving Indicator (HF—except cars sold in California)

The CRX HF is equipped with an Economy Driving Indicator light, to help you develop driving habits for better fuel economy.

NOTE:

Rapid acceleration or wide throttle openings will keep the indicator light from working; effective use of the indicator requires gradual acceleration.

- In each of the first four gears, the indicator light will come on when your engine is beginning to operate at a higher speed than that which will deliver optimum fuel economy.
- You should shift up to the next higher gear as soon as the light comes on (or even before the light comes on). The light will go out as soon as you shift up.
- As you develop economical driving habits, you will begin to "anticipate" the light and shift before it ever comes on. If you do this, the light will not come on at all, because you will always be keeping the engine in its most economical operating range.
- Remember: the Economy Driving Indicator is only a signal. Sometimes, road conditions or traffic may require you to accelerate to a higher engine speed than is the most economical, before shifting.

Shift Lever Position Indicator (Automatic Transmission only)

A lighted indicator between the fuel and coolant temperature gauges shows which gear you have selected.



Oil Pressure Warning Light

The oil pressure warning light will come on, and remain on, if there is insufficient oil pressure or when the ignition switch is turned on with the engine not running. If the light should come on while driving, get the car off the road as soon as you can, turn the engine off and check the engine oil level (see page [59](#)).

NOTE:

The oil pressure warning light will only light as a result of low oil pressure. It is not directly an oil level indicator.

CAUTION:

Running the engine while the oil pressure warning light is on constantly may cause immediate and severe engine damage.

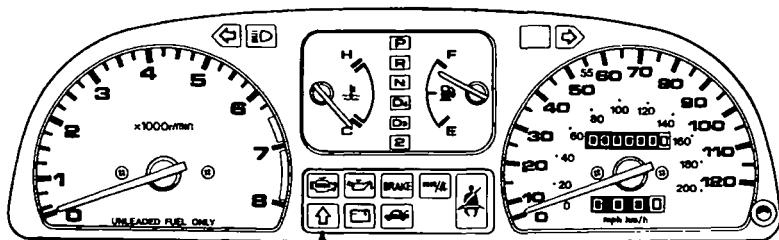


Parking Brake/Brake Failure Warning Light

Check the brake warning light every time you start the car. With the parking brake set, the warning light should go on when the ignition switch is turned to II or III. With the parking brake released, the light should go on when the ignition switch is turned to III. If the light goes on at any other time, it means the brake fluid level in the master cylinder reservoir is too low; add fluid and have your dealer check for leaks and brake pad wear immediately. (See page [68](#))

(cont'd)

Warning and Indicator Lights (cont'd)

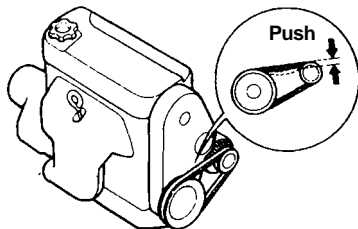


(HF-except cars sold
in California)



Charging System Warning Light

The charging system warning light comes on when there is a problem with the electrical charging system or when the ignition switch is turned on with the engine not running. If the light comes on while driving, get off the road, stop the car and turn off the ignition. Then check the alternator belt for proper tension.



To check the belt tension, push with about 98 N (22 lb) of force on the middle of the belt as shown. The belt should deflect about:

HF: 8—10 mm (0.3—0.4 in)

CRX/Si: 9—11 mm (0.4—0.4 in)

▲WARNING

If the engine has been running, some engine components may be hot enough to burn you.

NOTE:

If necessary, have the charging system checked by an authorized Honda dealer.



Headlight High Beam Indicator Light

This blue indicator light will go on whenever the high beams are switched on (see page 24).



Hatch-open Indicator Light

This light will go on when you turn on the ignition switch if the hatch is not fully closed.



Check Engine Warning Light

This light comes on for a couple of seconds each time the ignition is turned on. It will also come on, and remain on, if there is a malfunction in the emission control system. If the light comes on while driving, avoid driving at high speed, and have the system checked by a Honda dealer as soon as possible.



Seat Belt Warning Light

The seat belt warning light comes on when the ignition switch is turned on. If the front seat belts are fastened, it goes off in about two seconds. Otherwise it stays on (see pages 8 and 9).



Turn Signal/Hazard Warning Indicator Lights

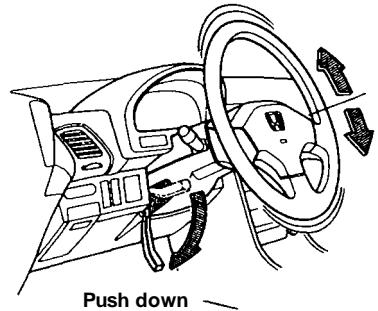
When the turn signal lever is pushed for left or right turns, the appropriate green indicator arrow on the instrument panel will blink along with the signal. Turning on the hazard warning switch will make all turn signals and both arrows blink (see page 24).

Tilt Steering

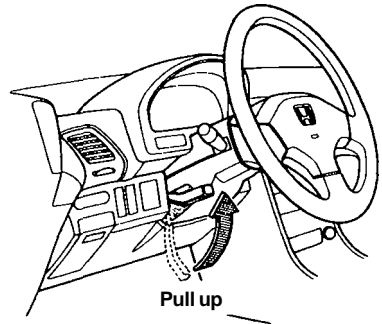
Tilt Steering (CRX/Si)

The steering wheel position can be adjusted to suit the driver preference.

1. Push the lever located on the left side of the steering column all the way down and hold it while adjusting the steering wheel to the desired position.



2. Hold the steering wheel in the desired position and pull the lever all the way up to lock it in place.



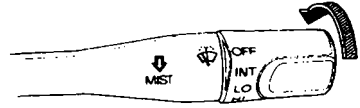
▲ WARNING

- Do not adjust the steering wheel position while driving.
- After adjusting the steering wheel position, make sure it is securely locked in place by "rocking" it up and down slightly.

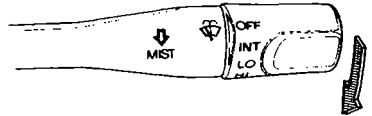
Windshield Wipers/Washer/Defogger

Windshield Wipers

Switch the wipers to INT for intermittent operation; LO for low speed operation; and HI for high speed operation.



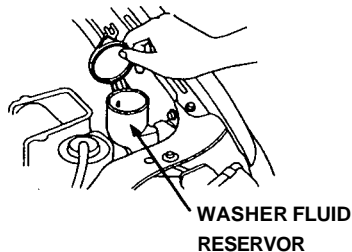
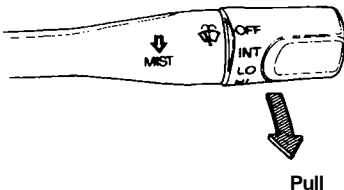
In fog or very light rain, push the lever down to the MIST position for temporary high speed operation of the wipers. The wipers will return to the rest position and the motor will shut off as soon as you release the lever.



Push down

Windshield Washer

Pull the wiper switch lever toward you to turn on the washer. Check the washer fluid regularly, especially during bad weather or whenever the washer has been in frequent use.



WINDSHIELD WASHER

RESERVOIR CAPACITY: 2.5 ℓ (2.6 US qt, 2.2 Imp qt)

Use a good quality commercial washer fluid for all-weather cleaning.

CAUTION:

- Do not use radiator antifreeze in the windshield washer; it will damage the paint.
- Do not use a vinegar/water combination in the windshield washer; it will damage the pump.
- Prolonged operation of the washer without fluid may damage the pump.

In freezing weather, warm the windshield with the defrosters before using the washer. This will help prevent icing which could seriously impair visibility.

(cont'd)