



2010
Technology Reference Guide

Odyssey



Information Display (LX, EX, and EX-L)

Consists of several displays that provide you with useful information.

Accessing the Information Display

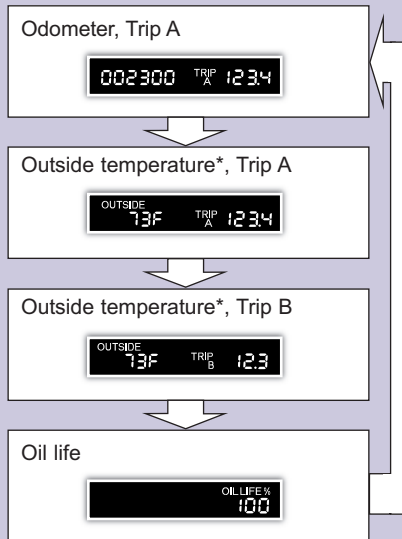
Once you start the engine, the display shows your last active selection from the previous drive cycle.



To **toggle** between the different displays, **press** the select/reset knob repeatedly.



Information Displays



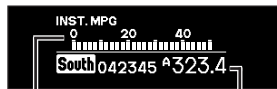
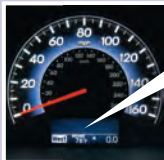
* if equipped

2010 Odyssey

Multi-Information Display (MID) (Touring)

Accessing the MID

Once you start the engine, the MID shows the last active lower display. **Press** the Info button to see the last active selection on the upper display.



Upper display

Lower display

To **toggle** between the different displays, **press** the Info button for the upper display and **press** the SEL/RESET button for the lower display.



MID Lower Displays

Odometer, Trip A

South 042345 A 323.4

Outside temperature, Trip A

South OUTSIDE 80°F A 323.4

Outside temperature, Trip B

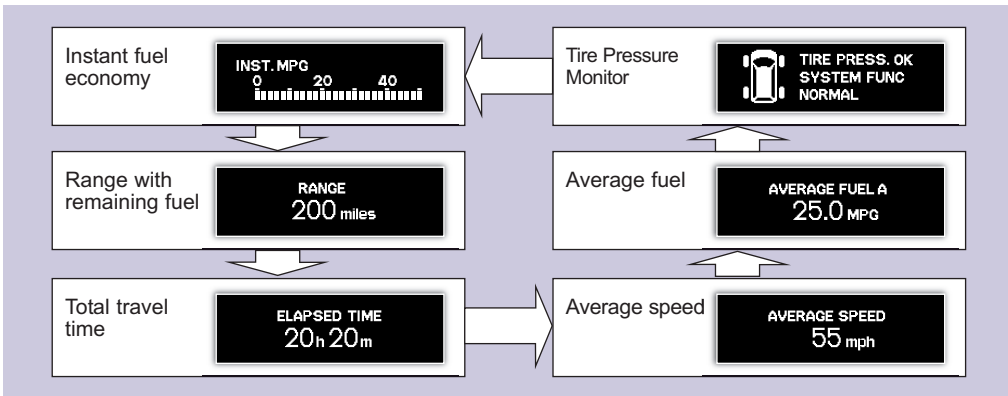
South OUTSIDE 80°F B 0.0

Oil life

South OIL LIFE 100%

MID Upper Displays

Basic trip computer displays are shown here.



Auto Door Locking/Unlocking

Default Lock Setting

The doors are preset to lock when your vehicle reaches about 9 mph.



Default Unlock Setting

Only the driver's door is preset to unlock when you shift into Park (P).



2010 Odyssey

Modifying the Auto Door Unlock Setting

Follow these steps to program all doors to unlock when you shift to Park:

LX, EX, and EX-L

1. Close the driver's door. **Shift** into Park.
2. Turn the ignition to the ON (II) position.
3. **Press and hold** the unlock side of the master lock switch for about 10 seconds. In that time, you will hear three clicks.
4. Within 5 seconds, **turn** the ignition to the LOCK (0) position.



See *Auto Door Locking/Unlocking* in your owner's manual for other programmable settings.

Touring

Press and hold the Info button for 3 seconds to enter customization mode. **Press** the Info button to toggle between the different MID displays, then **press** SEL/RESET to activate the selected menu.



1. Select "CHANGE SETTING."
2. Select "DOOR-WINDOW SETUP."
3. Select "AUTO DOOR UNLOCK."
4. Select "ALL DOORS WITH SHIFT TO P." Once set, the MID will show the previous menu.
5. To exit and save the setting, select "EXIT."



See *Customized Settings* in your owner's manual for other programmable settings.

Tire Pressure Monitoring System (TPMS)

Monitors the vehicle's tire pressures.

How It Works

Each tire valve stem contains a TPMS sensor.



When the tire pressure drops significantly below recommended levels, the low tire pressure indicator comes on.



Touring: The multi-information display also shows you a message indicating which tire(s) have low pressure.

What to Do

Visually inspect the tires and **use** a tire air pressure gauge to check tire pressures.



Inflate the tire(s) to the recommended pressures listed on the label on the driver's doorjamb.



2010 Odyssey

Driving Position Memory System (DPMS) (if equipped)

Store up to two driver's seat and mirror positions into memory. Settings are activated and adjusted when the corresponding remote is used to unlock the doors.

Programming DPMS

1. **Turn** the vehicle on. **Shift** into Park (P).



2. **Adjust** your preferred seat and outside mirror settings.



3. **Press and hold** the MEMO button until you hear a beep, then release.



4. **Press and hold** the memory button # corresponding to the remote (1 or 2) you are using until you hear two beeps.



Voice Command

Using the Voice Command System

To reduce driver distraction, use voice commands for hands-free calling, navigation, audio, and climate control functions. A full list of these commands is in the navigation system manual.

HFL Talk button: Give HFL commands or answer incoming calls.

NAVI Talk button: Give navigation, audio, and climate control commands.

NAVI Back button: Cancel a command or return to the previous screen.

HFL Back button: End a call, go back to the previous command, or cancel an operation.



Voice Command Tips:

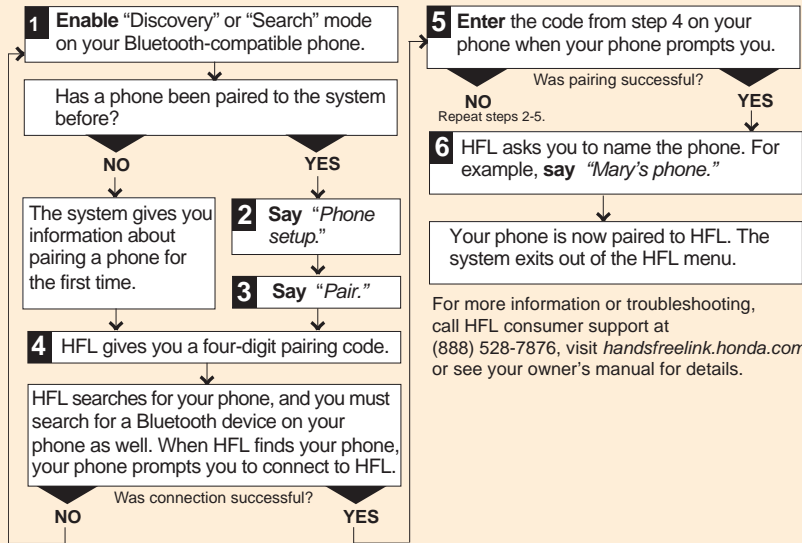
- Press and release the HFL or NAVI Talk button, wait for a beep, then give a command.
- For a list of available HFL commands, press and release the HFL Talk button and say "Hands-free help."
- For a list of available navigation commands, press and release the NAVI Talk button and say "Voice command help."
- Speak in a clear, natural voice.
- Reduce all background noise.
- Adjust the dashboard and side vents away from the microphone in the ceiling.
- Close the windows.

2010 Odyssey

Bluetooth® HandsFreeLink® (if equipped)

Pairing Your Phone

Press and release the HFL Talk button before you give a command.



For more information or troubleshooting, call HFL consumer support at (888) 528-7876, visit handsfreelink.honda.com, or see your owner's manual for details.

Making a Call

1. **Press** the HFL Talk button.



2. **Say** "Call" or "Dial" and the desired phone number.



3. **Press** the HFL Talk button, and **say** "Call" or "Dial" to continue.



4. The call is connected and heard through the vehicle's speakers.



Receiving a Call

1. A notification is heard, and "HANDS FREE LINK" appears on the audio display.



2. **Press** the HFL Talk button to accept the call.



3. **Press** the HFL Back button to end or decline the call.



2010 Odyssey

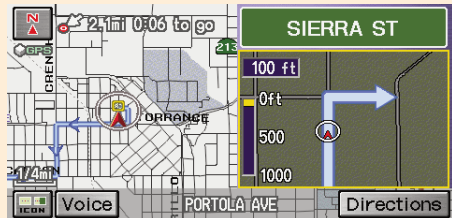
Navigation (if equipped)

Entering a Destination Using Voice Commands

Press and release the NAVI Talk button before you give a command.

- 1** Say "Display menu."
- 2** Say "Address."
- 3** Say "City" (or "Change state" if necessary).
- 4** Say the name of the city you want, or say "Current city" to select the city currently shown.
- 5** A list of city names appears. Say the number listed next to the city you want to select.
- 6** Say the street name. Do not include the direction (N, S, E, W) or type (St., Ave., Blvd., etc.).

- 7** A list of street names appears. Say the number listed next to the street you want to select.
- 8** Say the entire street address number. For example, "1-2-5-0."
- 9** The system calculates the route and displays the "Calculate route to" screen. Say "OK" to set the route.



Note: Entering destinations can also be done manually from the Menu screen.

Entering a Destination Using the "Find Nearest" Command

Try these simple steps to find a nearby point of interest, such as a gas station, movie theater, restaurant, etc.

Press and release the NAVI Talk button before you give a command.

1. Say "Find nearest ATM."



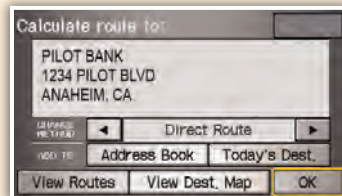
2. A list of the nearest ATMs are displayed by shortest distance to destination.



3. Say the number you want to select.



4. The system calculates the route and displays the "Calculate route to" screen. Say "OK" to set the route.



2010 Odyssey

Commonly Used Voice Commands

Here are some examples of commonly used voice commands. Try some of these to familiarize yourself with the voice command system.

Press and release the NAVI Talk button before you give a command.

Look for Restaurants in Your Location

Say a command like *"Display restaurant"* to see restaurant icons appear on the map.



Make Audio Selections

Say a command like *"Radio 97.1 FM"* or *"CD play track 5"* to select that station or song.



Adjust the Vehicle's Climate Setting

Say a command like *"Air conditioner on"* and *"Fan speed 4"* to adjust the setting to your liking.



Get Estimated Distance to Destination

After a destination is entered, say *"How far to destination?"* to hear the remaining distance.



Commonly Used Voice Commands (continued)

Press and release the NAVI Talk button before you give a command.

General Commands

(Accepted on most screens to change displays)



- Display map
- Display menu
- Setup
- Information
- Display audio screen
- What time is it?

Navigation Commands

(Accepted on Map screen after a destination is entered)



- How long/far to the destination?
- Display destination
- Display entire route

Find Place Commands

(Accepted on Map screen)



- Find nearest:
 - ATM
 - gas station
 - Mexican restaurant
 - post office
 - bank
 - Honda dealer
 - airport
 - hospital

Display Commands

(Accepted on Map screen)



- Display (or hide):
 - ATM
 - gas station
 - restaurant
 - post office
 - Display north up/heading up
 - Zoom in/out
 - Go home
 - Display current location

2010 Odyssey

Commonly Used Voice Commands (continued)

Press and release the NAVI Talk button before you give a command.

Audio Commands

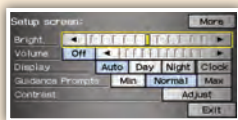
(Accepted on most screens)



- Radio on
- Radio # FM/AM
- Radio preset 1/2/3/4/5/6
- XM channel #
- XM preset 1/2/3/4/5/6
- CD play
- CD play track/disc #
- CD skip forward/back
- Auxiliary (AUX) play

Setup Commands

(Accepted on the Setup screen)



- Brightness up/down
- Volume up/down/min/max/off
- Interface dial feedback on/off
- Guidance prompts min/max/normal

Climate Control Commands

(Accepted on most screens)



- Air conditioner on/off
- Rear defrost on/off
- Climate control recirculate/fresh air
- Fan speed up/down
- Temperature # degrees (# = 57–87)
- Temperature max hot/cold

Help Commands

(Accepted on most screens)



- Help (list of available commands for current screen)
- Voice command help (from the INFO screen - list of all available navigation, audio, and climate control commands)

Rear Entertainment System (RES)

Rear Entertainment System (RES) (if equipped)

Rear passengers can enjoy a different media source than the front seat occupants.

Operating the RES from the Front Seat

1. **Press** REAR PWR. Rear passengers hear audio through the wireless headphones.
3. **Turn** the REAR CTRL knob clockwise to temporarily hear what is playing in the rear.



2. **Push** the REAR CTRL OFF knob to disable rear audio controls.
4. **Select** a media source for the rear passengers. **Turn** the REAR CTRL knob counterclockwise to return to the front audio controls.



Note:

- If listening to the same media source, both the driver and the rear passenger have the ability to control functions for that source.
- On models with navigation, you cannot listen to XM Radio and a CD at the same time.

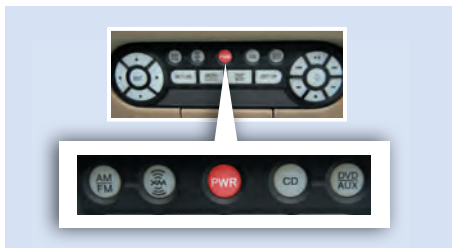
2010 Odyssey

Operating the RES from the Rear Seat

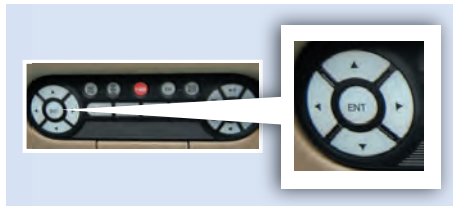
1. From the front panel, **make sure** REAR PWR is on and rear control is not disabled.



2. **Press** AM/FM, XM, CD, or DVD/AUX.



3. **Use** the (▲) (▼) (◀) (▶) buttons to navigate the menu on the display. **Press** ENT to make a selection.



4. The rear control panel can be detached and used as a remote control. **Press** RELEASE to remove it from the ceiling.



Rearview Camera (EX-L and Touring)

The display shows a view behind the vehicle.

To Turn the Camera On

1. **Shift** into Reverse (R).



2. The rear view is shown in the display area.

*EX-L without
navigation*

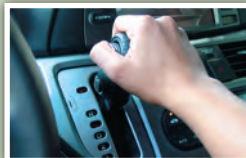


*Models with
navigation*



To Turn the Display Off

All models: **Shift** out of Reverse.



EX-L without navigation: **Press** the monitor on/off button while in Reverse with your foot on the brake. **Press again** to turn back on.



2010 Odyssey

Parking Sensor System (Touring)

Warns you of the proximity between your vehicle and nearby surrounding objects when parking or in Reverse.

To Turn the System On and Off

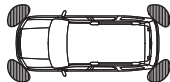
Press the parking sensor button. A light appears when the system is on.

How It Works

When the system senses an object, an indicator appears in the MID and a beep sounds. As you get closer to an object, the beep rate increases.



Corner Sensors



Within approx. 20 in. (50 cm)

Rear Center Sensors



Within approx. 70 in. (1.8 m)

Corner Sensor Indicator



Rear Center Sensor Indicator



About This Technology Reference Guide

This Technology Reference Guide has been prepared to help you get quickly acquainted with your new Honda, and to provide reference instructions on driving controls and convenience items.

However, this guide is not intended as a substitute for the Owner's Manual. For complete information on operating the vehicle safely, please refer to the Owner's Manual.

As with the Owner's Manual, this guide covers all models of the Honda Odyssey. Therefore, you may find descriptions of equipment and features that are not on your particular model.

Safety Reminder

Your vehicle is equipped with airbags. Airbags do not replace your seat belts; they add to the protection offered by seat belts. Airbags can help protect you in some types of collisions, but they do not provide protection in all collisions.

Always make sure you and your passengers wear seat belts, and that young children are properly secured in a child seat or booster in the rear seat. Never place an infant seat in the front passenger's seat as the force of a deploying airbag can seriously injure an infant.

Fuel Recommendation

- Use only unleaded gasoline of 87 octane or higher.
- Some gasoline in North America contains MMT, a manganese-based fuel additive. Prolonged and consistent use of gasoline containing MMT can deteriorate your vehicle's performance, fuel economy, and the emissions control system. Always use MMT-free gasoline if alternatives exist. Failures caused by use of gasoline containing MMT may not be covered under warranty.
- For further important information on fuel and lubricants for your car and information on gasoline that does not contain MMT, contact your dealer or visit Owner Link at www.hondacars.com.

HONDA
The Power of Dreams

