



2010
Technology Reference Guide

Ridgeline

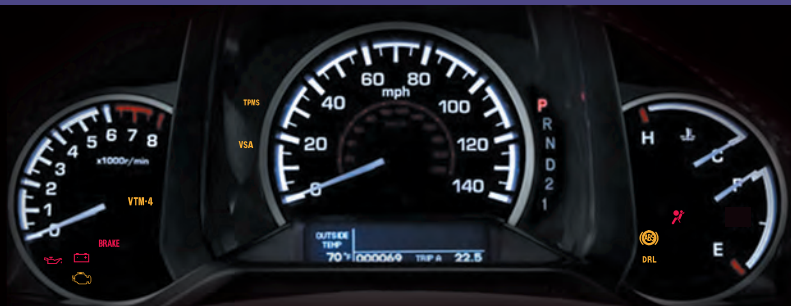


Indicators/Info Display/MID/TPMS

Instrument Panel Indicators

Briefly appear with each engine start. Red and amber indicators are most critical. Blue and green indicators are used for general information.

Malfunction Indicators: If an indicator remains on, there may be a problem; see your dealer.



Charging system

BRAKE

Low brake fluid



Low oil pressure



SRS (supplemental restraint system)

VTM-4

VTM-4 (Variable torque management 4WD)



ABS (anti-lock brake system)

DRL

DRL (daytime running lights)



Malfunction lamp (check engine light)

TPMS

TPMS (tire pressure monitoring system)

VSA

VSA (vehicle stability assist)

2010 Ridgeline

2010 Ridgeline

Condition Indicators: Action is needed by driver.



BRAKE Parking brake on: **Release**



Door/tailgate open:
Close door(s) / tailgate



Back window open:
Close back window



Message indicator*:
Press Info button



Seat belt reminder:
Fasten seat belt(s)



Low fuel: **Refill**



VTM-4 (blinks):
Pull over



A/T temperature:
Pull over



Low tire pressure:
Add air



Maintenance minder:
Make appointment



Washer level:
Add fluid

**Models with navigation only*

On/Off Indicators



**PASSENGER AIRBAG
OFF** (above Hazard
Warning button)



CRUISE CONTROL on



Immobilizer
Flashes: improperly coded key;
use correct key



SIDE AIRBAG OFF



CRUISE MAIN on



Headlights on



VSA solid: **off**
Blinks: **activated**



Bed lights on



Turn signals/hazards on



High beams on

Information Display (models without navigation)

Consists of several displays that provide you with useful information.

Accessing the Information Display

Once you start the engine, the information display shows your last active selection from the previous drive cycle.



To **toggle** between the different displays:

- **Press** the SELECT button repeatedly
- **Press** the TRIP/RESET button to switch between Trip A and B readings.



Information Displays

Outside temperature,
Odometer,
Trip meter



Outside temperature,
Instant and
average MPG, Trip meter



Outside temperature,
Instant MPG, Fuel
range, Trip meter



Oil life



2010 Ridgeline

Multi-Information Display (MID) (models with navigation)

Accessing the MID

Once you start the engine, the MID shows the last active selection from the previous drive cycle.

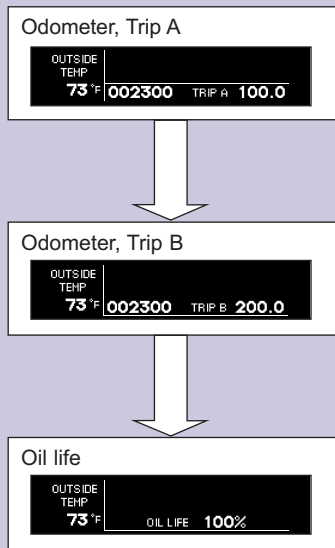


To **toggle** between the different displays:

- **Press** either Info button for the upper display.
- **Press** the SEL/RESET button for the lower display, to switch from Trip A to Trip B on the upper display, or to access sub-displays.

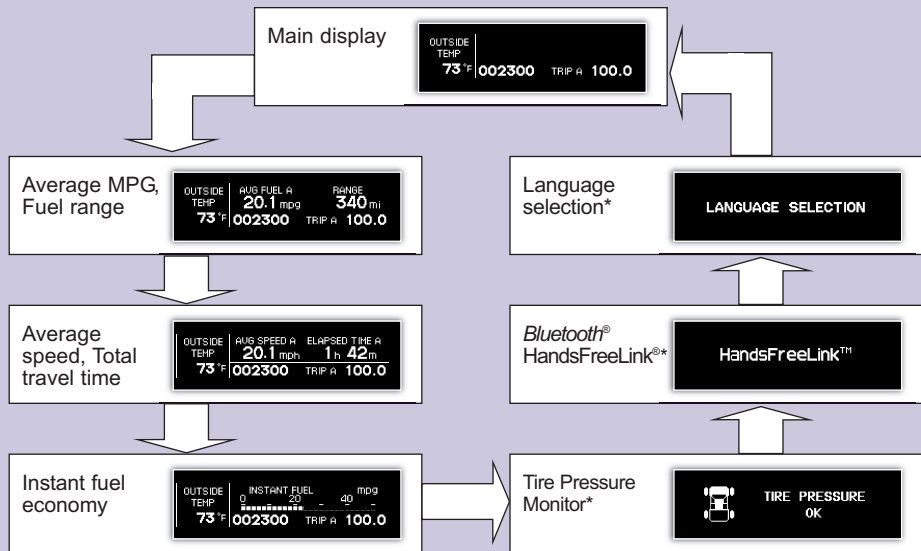


MID Lower Displays



MID Upper Displays

Basic trip computer displays are shown here.



*Press SEL/RESET for sub-displays.

2010 Ridgeline

Tire Pressure Monitoring System (TPMS)

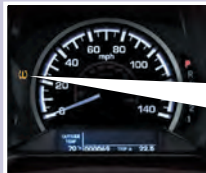
Monitors the vehicle's tire pressures.

How It Works

Each tire valve stem contains a TPMS sensor.



When the tire pressure drops significantly below recommended levels, the low tire pressure indicator comes on.



What to Do

Visually inspect the tires and **use** a tire air pressure gauge to check which tire(s) have low pressure.



Inflate the tire(s) to the recommended pressures listed on the label on the driver's doorjamb.



Auto Door Locking/Unlocking

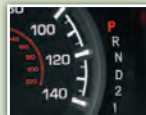
Default Lock Setting

The doors are preset to lock when your vehicle reaches about 9 mph.



Default Unlock Setting

Only the driver's door is preset to unlock when you shift into Park (P).



Modifying the Auto Door Unlock Setting

Follow these steps to program all doors to unlock when you shift into Park:

1. **Close** the driver's door. **Shift** into Park.
2. **Turn** the ignition to the ON (II) position.
3. **Press and hold** the unlock side of the master lock switch for about 10 seconds. In that time, you will hear three clicks.
4. Within 5 seconds, **turn** the ignition to the LOCK (0) position.



2010 Ridgeline

Programmable Auto Door Lock/Unlock Settings

Below are the different programmable options you can choose. See *Auto Door Locking/Unlocking* in your owner's manual for instructions on programming these settings.

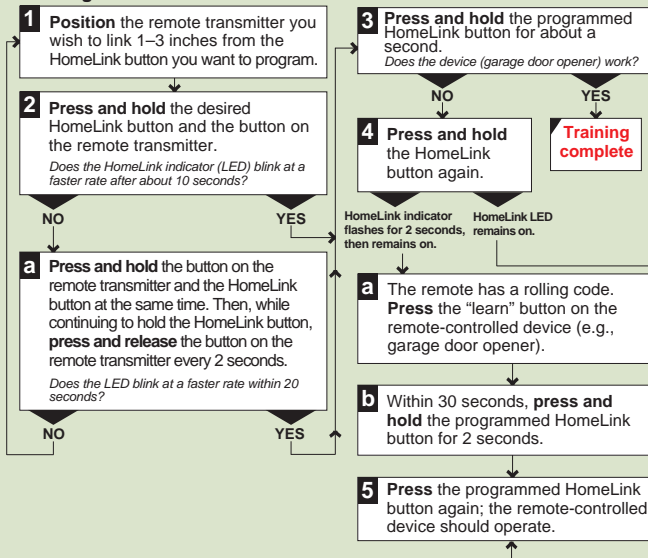
AUTO DOOR UNLOCK			
Auto Unlock (all doors)			
	When you turn the ignition OFF	When you shift into Park	
Auto Unlock (only driver's door)			
	When you turn the ignition OFF	When you shift into Park	
Turn off Auto Unlock			Operate manually

AUTO DOOR LOCK			
Auto Lock			
	When you reach 9 mph	When you shift out of Park	
Turn off Auto Lock			Operate manually

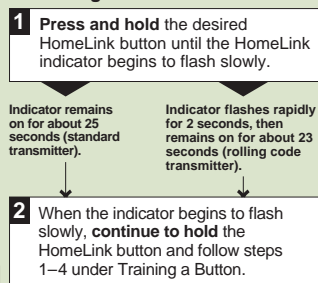
HomeLink® (if equipped)

The HomeLink Universal Transceiver built into your vehicle can be programmed to operate up to three remote-controlled devices around your home, such as garage doors, lighting, or home security systems.

Training a Button



Retraining a Button



Erasing Codes

To erase codes stored in all buttons, **press and hold** the two outer buttons until the HomeLink indicator begins to flash (about 10 to 20 seconds), then **release** the buttons.

If you sell the vehicle, make sure to erase all codes.

If you have any problems programming HomeLink, see the owner's manual included with the device you are trying to program, call HomeLink at (800) 355-3515 or visit www.homelink.com.

2010 Ridgeline

Rearview Camera (models with navigation)

The display shows a view behind the vehicle while in Reverse (R).



To turn the camera on:
Shift into Reverse.



To turn the camera off:
Shift out of Reverse.



Voice Command

Using the Voice Command System

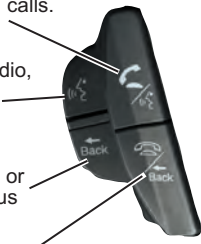
To reduce driver distraction, use voice commands for hands-free calling, navigation, audio, and climate control functions. A full list of these commands is in the navigation system manual.

HFL Talk button: Give HFL commands or answer incoming calls.

NAVI Talk button: Give navigation, audio, and climate control commands.

NAVI Back button: Cancel a command or return to the previous screen.

HFL Back button: End a call, go back to the previous command, or cancel an operation.



Voice Command Tips:

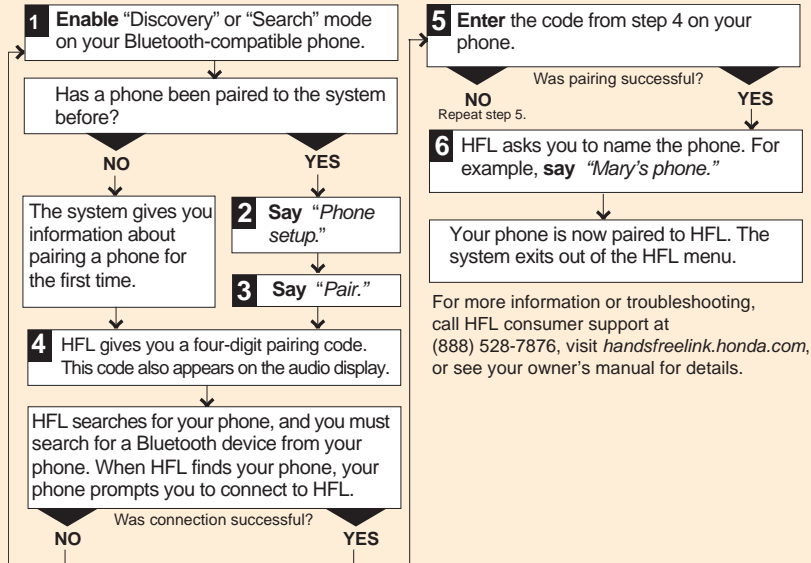
- Press and release the HFL or NAVI Talk button, wait for a beep, then give a command.
- For a list of available HFL commands, press and release the HFL Talk button and say "Hands-free help."
- For a list of available navigation commands, press and release the NAVI Talk button and say "Voice command help."
- Speak in a clear, natural voice.
- Reduce all background noise.
- Adjust the dashboard and side vents away from the microphone in the ceiling.
- Close the windows.

2010 Ridgeline

Bluetooth® HandsFreeLink® (if equipped)

Pairing Your Phone

Press and release the HFL Talk button before you give a command.



Making a Call

1. **Press** the HFL Talk button, and **say** "Call" or "Dial" and the desired phone number.



2. **Press** the HFL Talk button, and **say** "Call" or "Dial" to continue.

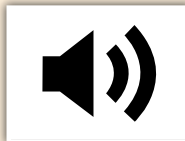


3. The call is connected and heard through the vehicle's speakers.



Receiving a Call

1. A notification is heard, and the following screen appears on the navigation display.



2. **Press** the HFL Talk button to accept the call.



3. **Press** the HFL Back button to end or decline the call.



2010 Ridgeline

Navigation (if equipped)

Entering a Destination Using Voice Commands

Press and release the NAVI Talk button before you give a command.

1 Say "Display menu."

2 Say "Address."

3 Say "City" (or "Change state" if necessary).

4 Say the name of the city you want, or say "Current city" to select the city currently shown.

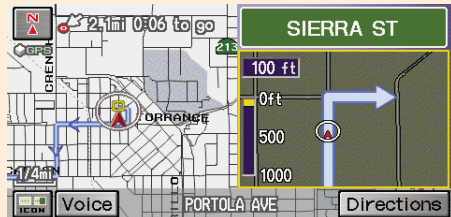
5 A list of city names appears. Say the number listed next to the city you want to select.

6 Say the street name. Do not include the direction (N, S, E, W) or type (St., Ave., Blvd., etc.).

7 A list of street names appears. Say the number listed next to the street you want to select.

8 Say the entire street address number. For example, "1-2-5-0."

9 The system calculates the route and displays the "Calculate route to" screen. Say "OK" to set the route.



Note: Entering destinations can also be done manually from the Menu screen.

Entering a Destination Using the "Find Nearest" Command

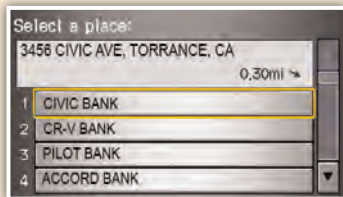
Try these simple steps to find a nearby point of interest, such as a gas station, movie theater, restaurant, etc.

Press and release the NAVI Talk button before you give a command.

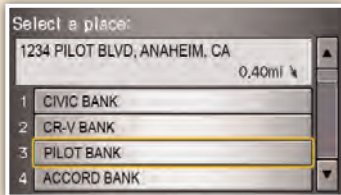
1. Say "Find nearest ATM."



2. A list of the nearest ATMs are displayed by shortest distance to destination.



3. Say the number you want to select.



4. The system calculates the route and displays the "Calculate route to" screen. Say "OK" to set the route.



2010 Ridgeline

Commonly Used Voice Commands

Here are some examples of commonly used voice commands. Try some of these to familiarize yourself with the voice command system.

Press and release the NAVI Talk button before you give a command.

Look for Restaurants in Your Location

Say a command like “Display Chinese restaurants” to see restaurant icons appear on the map.



Make Audio Selections

Say a command like “Radio 97.1 FM” or “CD play track 5” to select that station or song.



Adjust the Vehicle's Climate Setting

Say a command like “Air conditioner on” and “Fan speed 4” to adjust the setting to your liking.



Get Estimated Distance to Destination

After a destination is entered, **say** “How far to destination?” to hear the remaining distance.



Commonly Used Voice Commands (continued)

Press and release the NAVI Talk button before you give a command.

General Commands

(Accepted on most screens to change displays)



- Display map
- Display menu
- Setup
- Information
- Display audio screen
- What time is it?

Find Place Commands

(Accepted on Map screen)



- Find nearest:
 - ATM
 - gas station
 - Mexican restaurant
 - post office
 - bank
 - Honda dealer
 - airport
 - hospital

Navigation Commands

(Accepted on Map screen after a destination is entered)



- How long/far to the destination?
- Display destination
- Display entire route

Display Commands

(Accepted on Map screen)



- Display (or hide):
 - ATM
 - gas station
 - Mexican restaurant
 - post office
- Display north up/heading up
- Zoom in/out
- Go home
- Display current location

2010 Ridgeline

Commonly Used Voice Commands (continued)

Press and release the NAVI Talk button before you give a command.

Audio Commands

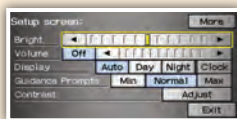
(Accepted on most screens)



- Radio on
- Radio # FM/AM
- Radio preset 1/2/3/4/5/6
- XM channel #
- XM preset 1/2/3/4/5/6
- CD play
- CD play track/disc #
- CD skip forward/back

Setup Commands

(Accepted on the Setup screen)



- Brightness up/down
- Volume up/down/min/max/off
- Guidance prompts min/max/normal

Climate Control Commands

(Accepted on most screens)



- Air conditioner on/off
- Climate control recirculate/fresh air
- Fan speed up/down
- Temperature # degrees (# = 57–87)
- Temperature max hot/cold

Help Commands

(Accepted on most screens)



- Help (list of available commands for current screen)
- Voice command help (list of all available navigation, audio, and climate control commands)

Voice Command/
HFL/Navigation

About This Technology Reference Guide

This Technology Reference Guide has been prepared to help you get quickly acquainted with your new Honda, and to provide reference instructions on driving controls and convenience items.

However, this guide is not intended as a substitute for the Owner's Manual. For complete information on operating the vehicle safely, please refer to the Owner's Manual.

As with the Owner's Manual, this guide covers all models of the Honda Ridgeline. Therefore, you may find descriptions of equipment and features that are not on your particular model.

Safety Reminder

Your vehicle is equipped with airbags. Airbags do not replace your seat belts; they add to the protection offered by seat belts. Airbags can help protect you in some types of collisions, but they do not provide protection in all collisions.

Always make sure you and your passengers wear seat belts, and that young children are properly secured in a child seat or booster in the rear seat. Never place an infant seat in the front passenger's seat as the force of a deploying airbag can seriously injure an infant.

Fuel Recommendation

- Use only unleaded gasoline of 87 octane or higher.
- Some gasoline in North America contains MMT, a manganese-based fuel additive. Prolonged and consistent use of gasoline containing MMT can deteriorate your vehicle's performance, fuel economy, and the emissions control system. Always use MMT-free gasoline if alternatives exist. Failures caused by use of gasoline containing MMT may not be covered under warranty.
- For further important information on fuel and lubricants for your car and information on gasoline that does not contain MMT, contact your dealer or visit Owner Link at www.hondacars.com.

HONDA
The Power of Dreams

