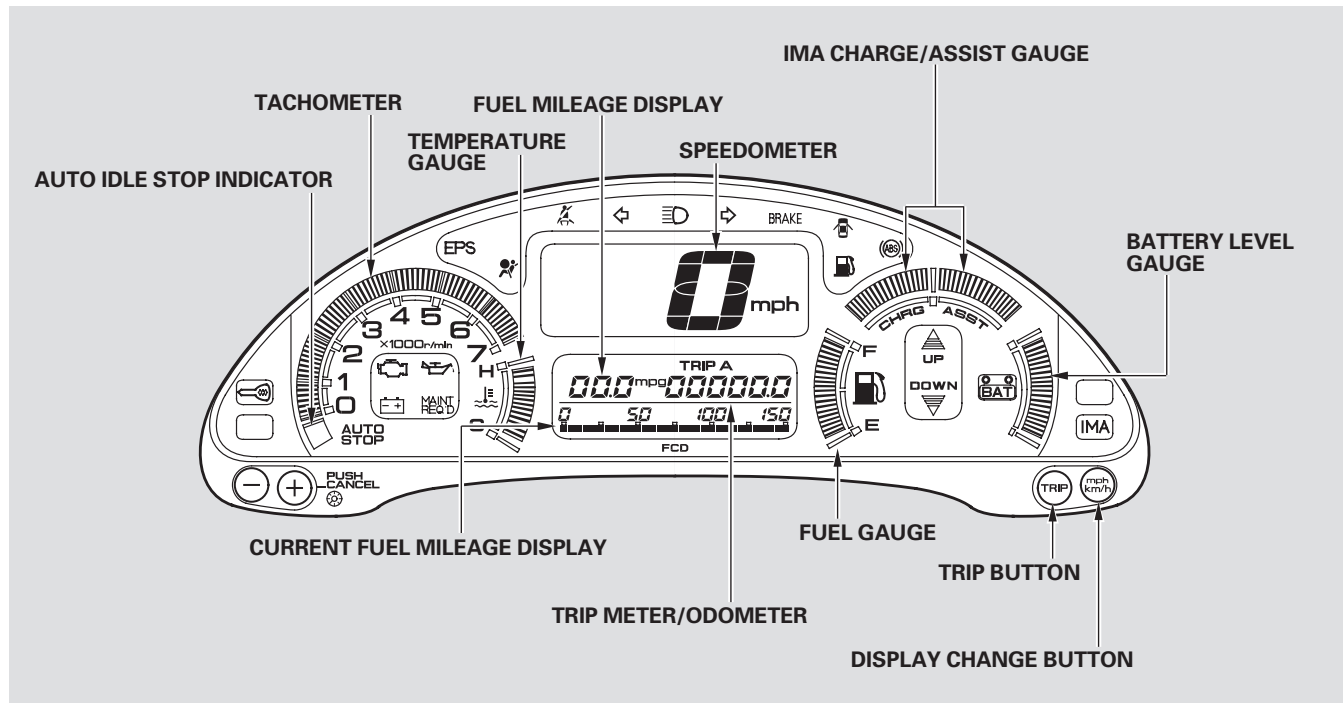


Gauges

Manual Transmission shown



Fuel Gauge

This shows how much fuel you have. It may show slightly more or less than the actual amount.

NOTICE: *Avoid driving with an extremely low fuel level. Running out of fuel could cause the engine to misfire, damaging the catalytic converter.*

Temperature Gauge

This shows the temperature of the engine's coolant. During normal operation, the reading should be in the middle of the gauge. In severe driving conditions, the reading may reach near the red mark. If it reaches the red mark, pull safely to the side of the road. Turn to page [175](#) for instructions and precautions on checking the engine's cooling system.

Odometer

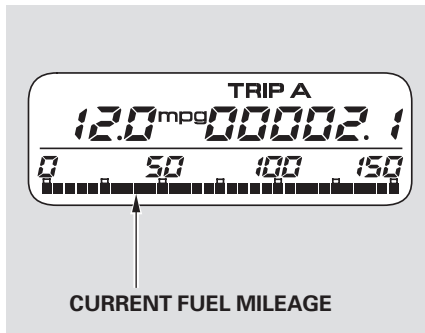
The odometer shows the total distance your vehicle has been driven in miles and kilometers. It is illegal under U.S. federal law and Canadian provincial regulations to disconnect, reset, or alter the odometer with the intent to change the number of miles and kilometers indicated.

Display Change Button

Push the Display Change button to switch the speedometer, trip meter, and odometer reading between miles per hour and kilometers per hour.

Gauges

Current Fuel Mileage



This display shows the current, or instantaneous fuel mileage you are getting. (U.S.: miles per hour and mpg, Canada: kilometer per hour and l/100 km)

You can turn off this display at any time. See page 50.

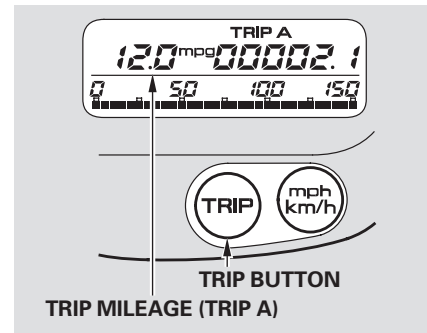
Trip Meters

The trip meters show the number of miles or kilometers driven since you last reset them.

There are two trip meters: Trip A and Trip B. Each trip meter works independently, so you can keep track of two different distances. To change the display to show Trip A, Trip B, or the odometer, press the Trip button repeatedly.

To reset a trip meter, display it, then press and hold the Trip button until the numbers reset to 0.0.

Trip Mileage



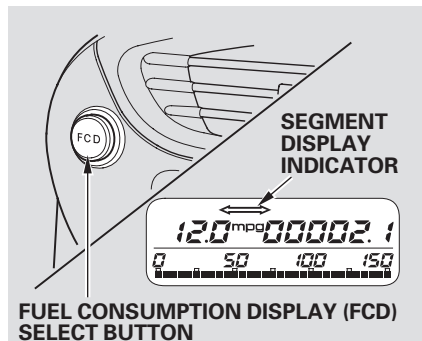
When a trip meter is displayed, the average fuel mileage you have been getting during that trip is shown in the Fuel Mileage display. This number is updated once per minute.

When you reset a trip meter, the average fuel mileage for that trip meter also resets.

This display can be turned off at any time. See page 50.

Segment Distance and Fuel Mileage

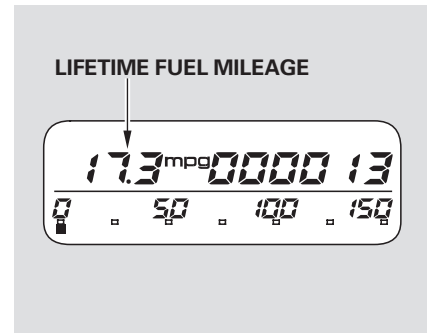
Press the FCD select button to display the distance and average fuel mileage for a segment of a trip. The Segment Display indicator will come on to remind you that this is the segment distance and fuel mileage display.



To reset the display, press and hold the FCD Select button until the display resets to zero and dashes. The system then begins displaying the distance and average fuel mileage from that point. The display is updated once per minute.

To switch between the segment display and the Trip Meter/Odometer display, press and release the FCD Select button.

Lifetime Fuel Mileage



When the odometer is displayed, the Fuel Mileage display shows the lifetime fuel mileage. This is the average fuel mileage your vehicle has gotten since the last time the display was reset.

CONTINUED

Gauges

To reset this display, turn the ignition switch to ON (II), the transmission is in neutral or Park (CVT), and the parking brake is set. Use the Trip button to display the odometer. Then press and hold the Trip button until the Lifetime Fuel Mileage Display begins to blink (approximately five seconds). Release the Trip button, then press it again while the display is blinking and hold it until the display clears to dashes.

Turning Off the Mileage Displays

You can temporarily turn off the Current Fuel Mileage and Fuel Mileage displays.

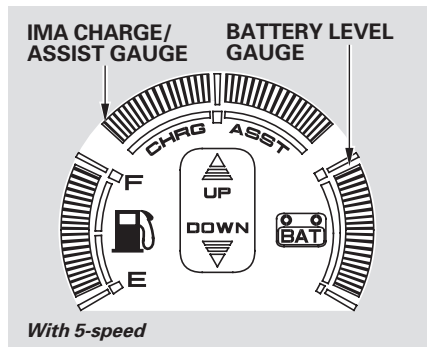
To turn them off:

1. Turn the ignition switch to ON (II), the transmission is in neutral or Park (CVT), and the parking brake is set.
2. Use the Trip button to select Trip A, Trip B, or the odometer.
3. Press and hold the FCD Select button for approximately three seconds. The Current Fuel Mileage display will turn off.
4. Press and hold the FCD Select button again. The Fuel Mileage display for the meter you are displaying (Trip A, Trip B, or odometer) will turn off.

5. Use the Trip button to select another mileage display.

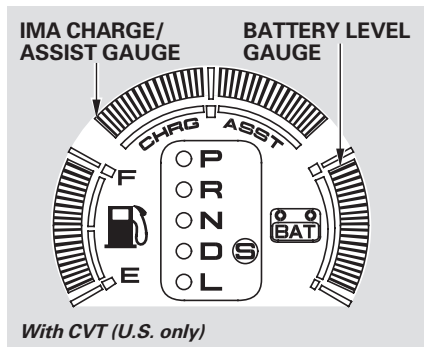
6. To turn off the other trip meters, select the meter with the Trip button, and hold the FCD select button.

Although the displays are turned off, the average fuel mileages continue to be calculated. The displays will turn back on when you press and hold the FCD Select button again.



Battery Level Gauge

This gauge shows you the state of charge of the battery for the Integrated Motor Assist (IMA). This battery is recharged by the engine, and discharged by the IMA when it is assisting the engine with powering the vehicle.



The gauge reading may drop near the bottom under driving conditions that require assist for a long time, such as prolonged acceleration or climbing a long hill. The engine will recharge the battery as you continue driving.

If the battery is mostly discharged, the Auto Idle Stop function is disabled (see pages 109 and 116).

Charge/Assist Gauge

This gauge shows the status of the Integrated Motor Assist (IMA). If the indicator is on the left side of the gauge, the IMA battery is being charged. If the indicator is on the right side of the gauge, the IMA is assisting the engine.