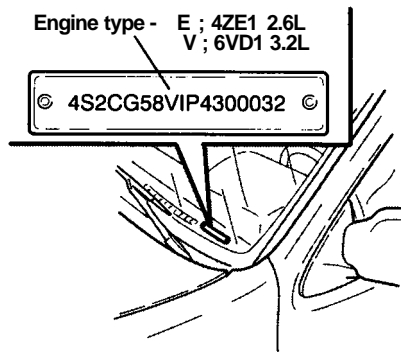


Vehicle Identification

Vehicle Identification



Vehicle Identification Number (VIN)

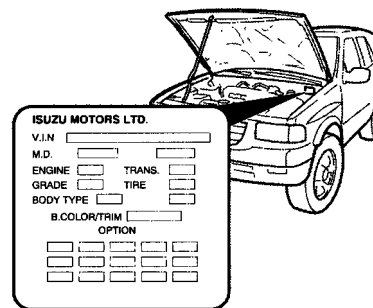
This is the legal identification of the vehicle. It appears on a plate attached to the left top of the instrument panel and can be easily seen through the windshield from outside the vehicle. The VIN also appears on the vehicle's certification label on the driver's door lock pillar.

Engine Identification

You can identify your engine from the VIN. The eighth character of the VIN is the engine code that gives the engine model (refer to the illustration).

Some information in this section may refer to the engine model. The engine number is stamped on the left side (exhaust manifold side) of the cylinder block near the transmission housing.

Service Parts Identification



The Vehicle Information Plate (Service Parts ID Plate) is provided on all vehicle models.

It is located on the center dash wall inside the engine compartment. The plate lists the VIN (Vehicle Identification Number), paint information and all production options and special equipment on the vehicle when it was shipped from the factory. Be

sure to provide this information to your authorized Honda Dealer when it is necessary to order parts.

Specifications

These specifications are given here for information only. Before using them, see the cautions and other instructions throughout this manual. For further information, see the Service Manual covering the chassis or body parts in question. Your Honda Dealer may also be able to help.

Vehicle Loading Information

The components of your vehicle are designed to provide satisfactory service only if the vehicle is not loaded in excess of either the Gross Vehicle Weight Rating (GVWR) or the maximum front and rear Gross Axle Weight Ratings (GAWRs). These ratings are listed on the Vehicle Certification Label located on the left door lock pillar.

Your Honda Dealer can advise you of the proper loading conditions for your vehicle. The use of selected heavier suspension components for added durability purposes does not increase any of the weight ratings printed on the Vehicle Certification Label.

Maximum Front and Rear Axle Weight

The weight of the cargo load must be properly distributed over both the front and rear axles. The Certification Label shows the maximum weight that the front axle (front GAWR) can carry. It also shows the maximum weight that the rear axle (rear GAWR) can carry. The GVWR represents the maximum permissible loaded weight of the vehicle and takes into account the engine, transmission, frame, springs, brake, axle, and tire capabilities.

Actual loads on the front and rear axles can only be determined by weighing the vehicle. This can be done at highway weight stations or other such commercial weigh stations. Consult your Honda Dealer for assistance. The cargo load should be distributed on both sides as equally as possible.

Vehicle Loading

Effect on Warranty

Your Limited Warranty on your new Honda vehicle does not apply to any part of your vehicle that has been subject to misuse. Any part which fails because of overloading is considered misuse.

Vehicle Certification Label

The Certification Label shows the GVWR and the front and rear GAWRs for your vehicle.

Gross Vehicle Weight (GVW) is the weight of the originally equipped vehicle and all items added to it after it has left the factory. This includes the driver and all occupants; and the load the vehicle is carrying. The GVW must not exceed the GVWR. Also, the front and rear gross axle weight must not exceed the front and rear GAWRs.

Engine

Engine model	V6-3.2L	L4-2.6L
Item		
Engine type	Water cooled 4-stroke, 75°V	Water cooled 4-stroke
Piston displacement	3,165 cc (193.5 cu.in.)	2,559 cc (156.1 cu.in.)
Number of cylinders	6	4
Compression ratio	9.3:1	8.6:1
Spark plugs	FR2LS/BKR6E-11/K20PR-U11	BPR5ES-11/R43XLS or equivalent
Spark plug gap	1.05 mm (0.04 in.)	
Oil filter	Full-flow cartridge type	
Oil capacity (Original factory fill or rebuilt engine)	6.0 liters (6.3 U.S. quarts)	5.5 liters (5.8 U.S. quarts)
*Oil capacity (Service change)		
with filter change	5.4 liters (5.7 U.S. quarts)	4.2 liters (4.4 U.S. quarts)
without filter change	4.7 liters (5.0 U.S. quarts)	3.9 liters (4.1 U.S. quarts)
Idle speed	750 RPM	900 RPM
Valve clearance (Cold)		
cold: Intake	Not adjustable (Hydraulic Adjuster)	0.15 mm (0.006 in.)
cold: Exhaust		0.25 mm (0.010 in.)

* Oil capacities shown are approximate refill capacities.

* After refill, recheck oil level.

Specifications

Cooling System

Radiator type		Tube and corrugated fins pressure type
Capacity	V6-3.2L	9.2 liters (9.7 U.S. quarts) for MT 8.8 liters (9.3 U.S. quarts) for AT
	L4-2.6L	9.0 liters (9.5 U.S. quarts)
Thermostat	V6-3.2L	Wax pellet type 76.5°C (170°F)
	L4-2.6L	Wax pellet type 82°C (180°F)

Air Conditioning

Refrigerant type	R-134a
Charge quantity	650g (22.9 oz)
Lubricant type	PAG oil

Clutch

Engine	V6-3.2L	L4-2.6L
Transmission	MUA	BW
Clutch size	260 mm (10.24 in.)	240 mm (9.45 in.)
Type	Dry single plate disc with diaphragm spring	
Clutch control operation	Hydraulic	
Clutch pedal free play	5 mm – 15 mm (0.2 in. – 0.6 in.)	

Manual Transmission and Transfer Case

Engine	V6-3.2L		L4-2.6L
	2WD	4WD	2WD
Gear ratio transmission			
Rev.	3.873	3.873	3.759
1st	3.767	3.767	3.759
2nd	2.248	2.248	2.185
3rd	1.404	1.404	1.421
4th	1.000	1.000	1.000
5th	0.809	0.809	0.806
Transfer case			
High	—	1.000	—
Low	—	2.283	—
Oil capacity			
Transmission	2.95 liters (3.1 U.S. quarts)	2.95 liters (3.1 U.S. quarts)	2.25 liters (2.2 U.S. quarts)
Transfer case	—	1.45 liters (1.5 U.S. quarts)	—

Automatic Transmission and Transfer Case

Engine	V6-3.2L	
	2WD	4WD
Gear ratio transmission		
Rev.	2.000	2.000
1st	2.856	2.856
2nd	1.618	1.618
3rd	1.000	1.000
Overdrive	0.723	0.723
Transfer case		
High	—	1.000
Low	—	2.283
Gear control operation	Floor control	
Fluid capacity		
Transmission	8.6 liters (9.1 U.S. quarts)	8.6 liters (9.1 U.S. quarts)
Transfer case	—	1.45 liters (1.5 U.S. quarts)

Fuel Tank Capacity

83 liters (21.9 U.S. gallons)

Specifications

Front Suspension

Independent wishbone arms, torsion bar springs with stabilizer bar.

Front Wheel Alignment

Toe-in	2 ± 2 mm (0.08 in.)	—
Camber	$30' \pm 60'$	No more than 45' side-to-side variation
Caster	$2^{\circ}20' \pm 45'$	No more than 35' side-to-side variation

Rear Suspension

Semi-elliptic, rubber bushed, leaf type springs and direct double-acting shock absorbers.

Steering

Recirculating ball.

Service Brake

Hydraulic Front: Disc brake.
Rear: Self-adjusting drum brake, leading-trailing (4-cyl. engine)
Disc brake (V6 engine)

Parking Brake

Mechanical, operating on rear wheels (4-cyl. engine).
Mechanical, drum in disc, duo-servo, manual-adjusting, operating on rear wheels (V6 engine).

Battery

Models	2.6L Engine	3.2L Engine
Voltage (V)	12	12
Cold-cranking performance (Amp)	356	582
Reserve capacity (Min.)	99	133
BCI group no.	25	24

Specifications

Battery

Models	2.6L Engine	3.2L Engine
Voltage (V)	12	12
Cold-cranking performance (Amp)	356	582
Reserve capacity (Min.)	99	133
BCI group no.	25	24

Rear Axle

Models		2WD		4WD
		2.6L	3.2L	
Gear ratio	225/75R15	4.300	4.100	–
	245/70R16	–		4.300
Lubricant capacity		1.85 liters (1.95 U.S. quarts)	1.77 liters (1.87 U.S. quarts)	

Front Axle (4WD Model)

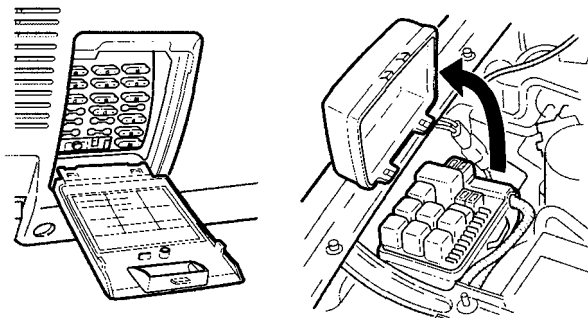
Gear ratio	225/75R15 tires	4.100
	245/70R16 tires	4.300
Lubricant capacity		1.5 liters (1.6 U.S. quarts)

Specifications

Wheels and Tires

Tire size	225/75R15	245/70R16
Wheel size	15 x 6JJ	16 x 7.5JJ
Tire pressure		
Front kPa (psi)	180 (26)	200 (29)
Rear kPa (psi)	180 (26)	200 (29)
Wheel nut tightening torque	Aluminum wheel; 118 N·m (86.8 ft·lb) Steel wheel; 89 N·m (66 ft·lb)	

Fuses



Fuse boxes are installed on the left underside of the instrument panel and the right side of the engine compartment. Each fuse box contains spare fuse cartridges.

NOTICE

Replacing a fuse with one that has a higher rating greatly increases the chances of damaging the electrical system. If you do not have a replacement fuse with the proper rating for the circuit, install one with a lower rating.

Fuse Box: Instrument Panel

Amperage		Applicability
1	10A	Tail, Parking, Sidemarker, Illumination light
2	10A	Stop light
3	10A	Dome
4	25A	Rear defogger
5	10A	TCM (V6-3.2L)
	20A	Fuel pump (L4-2.6L)
6	15A	Wipers, Washer
7	10A	Turn signal lights, Gauge
8	10A	AC generator, Back-up light
9	15A	Ignition coil
10	10A	Rear wiper
11	10A	Starter
12	15A	Lighter, Radio
13	20A	Rear wheel anti-lock
Circuit breaker 30A		Power window

Fuse Box: Engine Compartment

Amperage		Applicability
1	15A (4-cyl.)	ECM
	10A (V6)	O ₂ Sensor
2	20A	Fuel pump
3	15A	Hazard warning light
4	10A	Horn
5	10A	Charge light
6	10A	A/T lock (V6), O ₂ Sensor (4-cyl.)
7	20A	Heater
8	10A	Air conditioner
9	10A	Headlight; Right
10	10A	Headlight; Left

Specifications

Light Bulbs

Application	Bulb No.	Quantity	Rating Candlepower
Front Lights			
Headlight – Halogen	9004	2	65/45 watts
Turn signal & Parking light	1034	2	3/32
Sidemarker	194	2	2
Rear Lights			
Back-up	1156	2	32
License	–	2	5 watts
Tail, Stop & Sidemarker	1157	2	3/32
Turn signal	1156	2	32
High mounted stop light	–	4	5 watts
Interior Illumination			
A/C-heater cont.	74	1	1.4
Dome light	–	1	10 watts
Instrument cluster	158/74	3/6 or 2	2/1.4
Stop light	–	2	5 watts
Luggage light	–	1	10 watts
Step light	–	4	5 watts

Dimensions and Weights

	Model	2WD	4WD
Wheelbase	–	2,760 mm (108.6 in.)	
Overall Length	P225/75R15	4,670 mm (183.8 in.)	
	P245/70R16	4,690 mm (184.6 in.)	
Overall Width	P225/75R15	1,690 mm (66.5 in.)	
	P245/70R16	1,740 mm (65.5 in.)	
Overall Height (At curb Wt.)	P225/75R15	1,690 mm (68.5 in.)	
	P245/70R16	1,690 mm (66.5 in.)	
Tread Front	P225/75R15	1,440 mm (56.7 in.)	
	P245/70R16	1,465 mm (57.6 in.)	
Tread Rear	P225/70R15	1,445 mm (56.9 in.)	
	P245/70R16	1,475 mm (58.0 in.)	
GVWR	2.6L engine	2,065 kg (4,550 lb)	–
	3.2L engine	2,110 kg (4,650 lb)	2,220 kg (4,900 lb)

Note:GVWR — Gross Vehicle Weight Rating