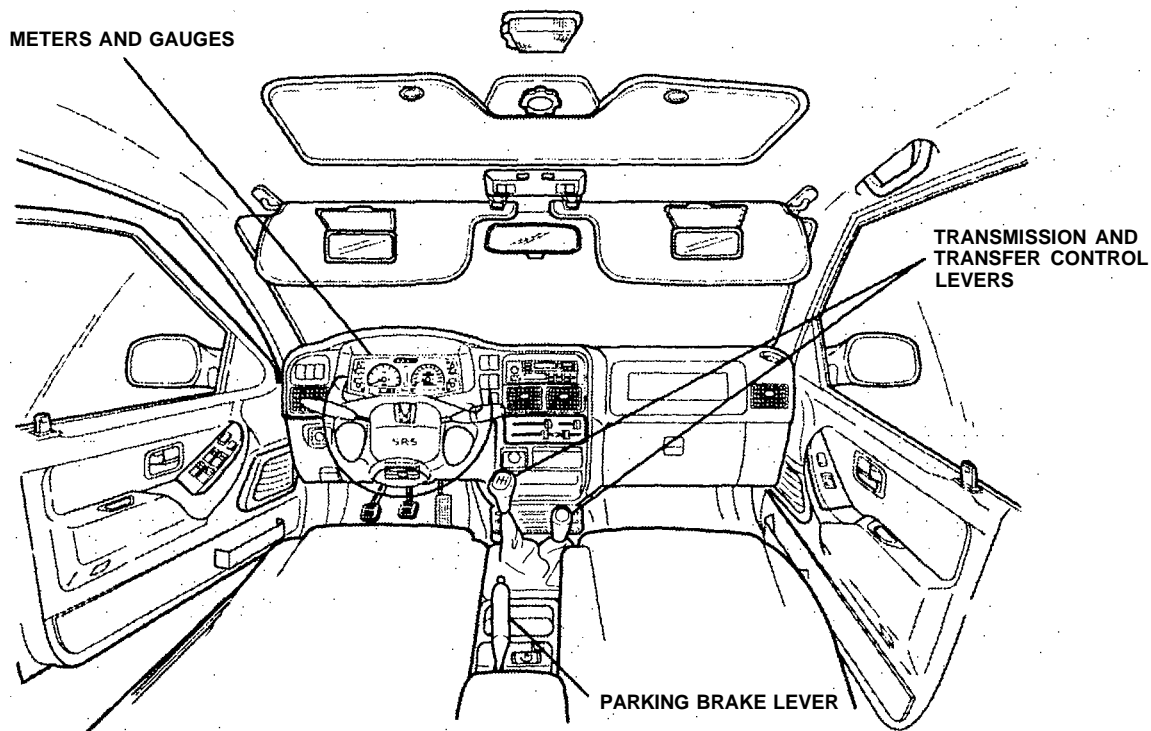
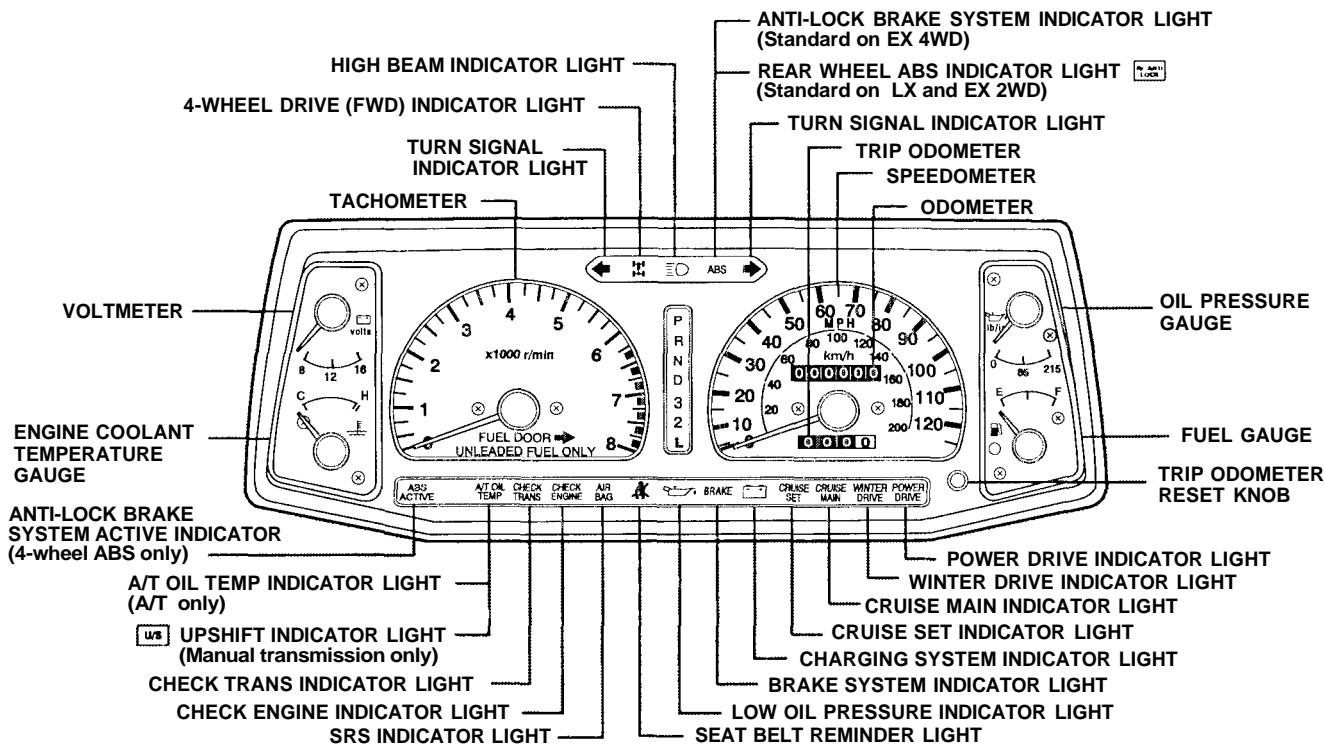


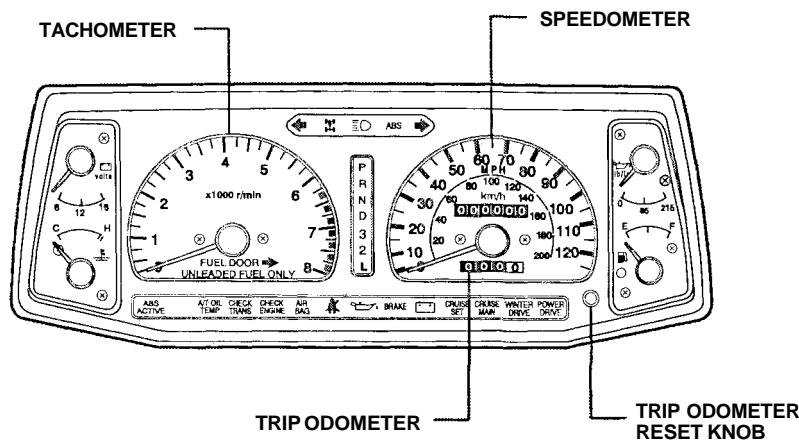
Control Locations



Indicators and Gauges



Gauges



Tachometer

The tachometer shows the engine speed in revolutions per minute (rpm). To protect the engine from damage, never drive with the tachometer needle in the red zone.

Speedometer

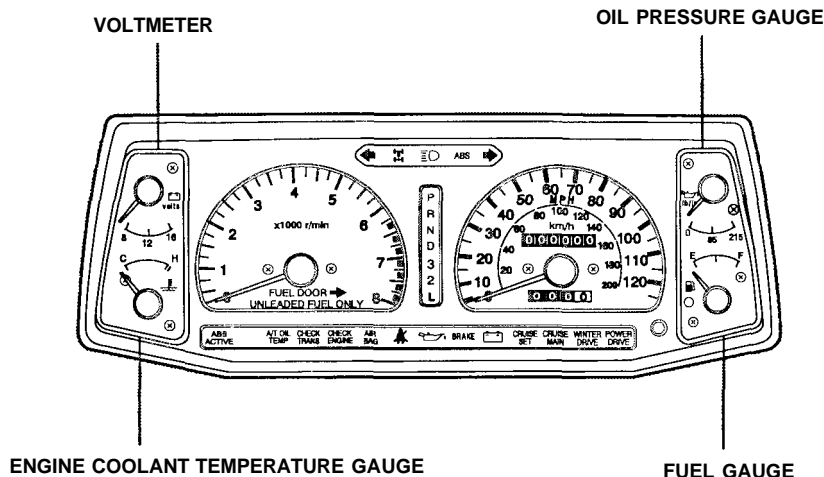
The speedometer shows vehicle speed in miles per hour (mph).

Odometer

The odometer indicates the total distance your vehicle has been driven.

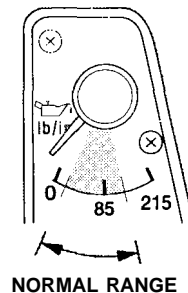
Trip Odometer/Reset Knob

Return the trip odometer to zero by pushing the reset knob.



Oil Pressure Gauge

The oil pressure gauge indicates the pressure of oil in the engine while the engine is running. The gray area indicates the normal oil pressure range.



The oil pressure can vary greatly with engine speed and temperature. If the indicated oil pressure is too low and does not rise with

increased engine speed, turn off the engine. After about five minutes, check the engine's oil level. If the level is normal, there may be a mechanical problem.

NOTICE

Running the engine with low oil pressure can cause serious mechanical damage almost immediately. Have the engine checked as soon as possible.

Fuel Gauge

The fuel gauge will register the approximate fuel level in the tank when the key is in the "ON" position. The following conditions may be considered normal:

- Gas station pumps may shut off before the fuel gauge indicates "F" (FULL).

- The amount of fuel required for a fill-up may not exactly correspond to the gauge.
- The needle may not move away from "F" (FULL) until some time after fill-up.
- The needle may move during turning, stopping and acceleration.

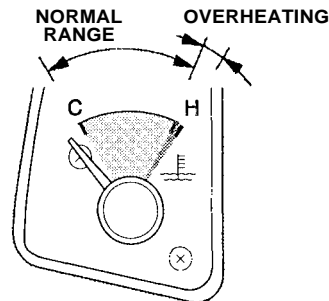
Gauge Reading	Remaining Amount Approx. Gallons (Liters)
F	21.9 (83.0)
1/2	11.9 (45.0)
E	2.9 (11.0)

Fuel Door →

This is a reminder that the fuel fill door is on the right side of the vehicle. Always park with that side closest to the service station pumps.

Engine Coolant Temperature Gauge

When the key is in the "ON" position, the engine coolant temperature gauge indicates the temperature of the engine coolant. The letters "C" and "H" on the gauge represent "Cold" and "Hot," respectively.



The gray area indicates the normal engine coolant temperature.

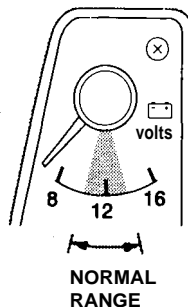
If the pointer reaches the "H" mark, pull safely to the side of the road. Turn to page [180](#) for instructions and precautions on checking the engine's cooling system.

NOTICE

Driving with the temperature gauge pointer at "H" can cause serious damage to the engine.

Voltmeter

The voltmeter indicates the battery voltage when the ignition switch is turned on. Normal operating voltage is 10 — 14 volts.



If the voltmeter does not read in the normal range with the engine running, there may be a problem in the charging system. Have your vehicle inspected as soon as possible.