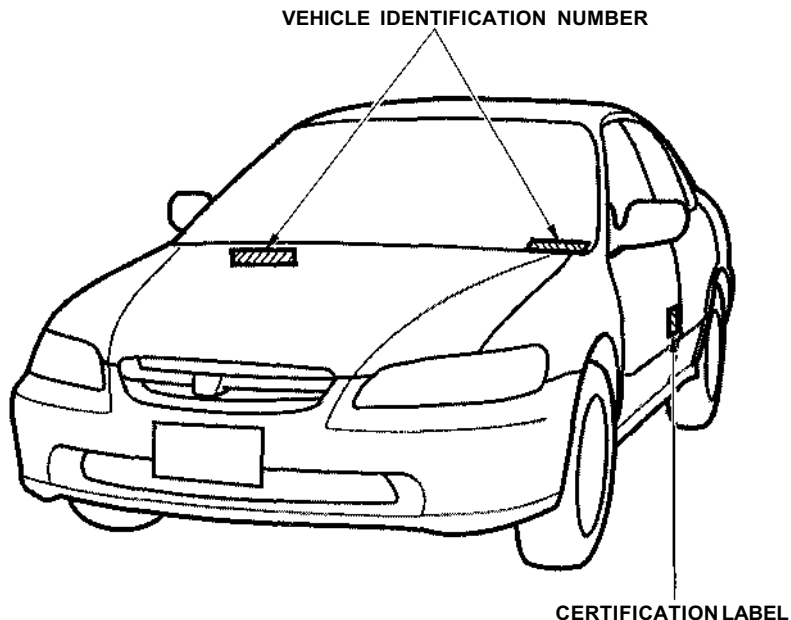


Identification Numbers

Your car has several identifying numbers located in various places.

The Vehicle Identification Number (VIN) is the 17-digit number your Honda dealer uses to register your car for warranty purposes. It is also necessary for licensing and insuring your car. The easiest place to find the VIN is on a plate fastened to the top of the dashboard. You can see it by looking through the windshield on the driver's side. It is also on the Certification label attached to the driver's doorjamb, and is stamped on the engine compartment bulkhead. The VIN is also provided in bar code on the Certification label.

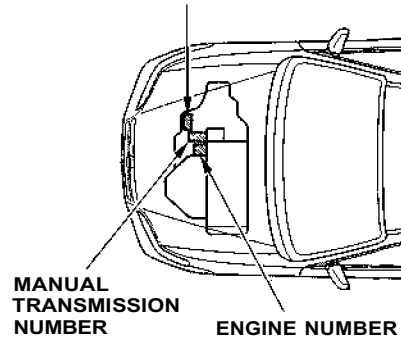


The Engine Number is stamped into the engine block. It is on the front.

The Transmission Number is on a label on top of the transmission.

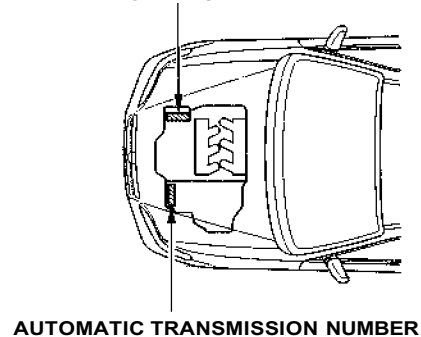
4-cylinder Models

AUTOMATIC TRANSMISSION NUMBER



6-cylinder Models

ENGINE NUMBER



Specifications

Dimensions

Length	188.8 in (4,795 mm)
Width	70.3 in (1,785 mm)
Height	56.9 in (1,445 mm) 57.3 in (1,455 mm) *
Wheelbase	106.9 in (2,715 mm)
Track	Front 61.2 in (1,555 mm) Rear 60.4 in (1,535 mm)

* : 6-cylinder models

Weights

Gross vehicle weight rating	See the certification label attached to the driver's doorjamb.
-----------------------------	--

Air Conditioning

Refrigerant type	HFC-134a (R-134a)
Charge quantity	25 - 27 oz (700 - 750 g)
Lubricant type	ND-OIL8

Capacities

Fuel tank	Approx. 17.12 US gal (64.8 ℓ , 14.26 Imp gal)
-----------	--

Capacities

Engine coolant	Change* ¹	
	Manual	1.45 US gal (5.5 ℓ , 1.21 Imp gal)
	Automatic	1.43 US gal (5.4 ℓ , 1.19 Imp gal) 1.48 US gal (5.6 ℓ , 1.23 Imp gal) **
Total		
	Manual	1.85 US gal (7.0 ℓ , 1.54 Imp gal)
	Automatic	1.82 US gal (6.9 ℓ , 1.52 Imp gal) 1.98 US gal (7.5 ℓ , 1.65 Imp gal) **
Engine oil	Change* ²	
	Including filter	4.5 US qt (4.3 ℓ , 3.8 Imp qt) 4.6 US qt (4.4 ℓ , 3.9 Imp qt) **
	Without filter	4.2 US qt (4.0 ℓ , 3.5 Imp qt)
Total		
		5.9 US qt (5.6 ℓ , 4.9 Imp qt) 5.3 US qt (5.0 ℓ , 4.4 Imp qt) **
Manual transmission oil	Change	2.0 US qt (1.9 ℓ , 1.7 Imp qt)
	Total	2.1 US qt (2.0 ℓ , 1.8 Imp qt)
Automatic transmission fluid	Change	2.6 US qt (2.5 ℓ , 2.2 Imp qt)
		3.1 US qt (2.9 ℓ , 2.6 Imp qt) **
	Total	6.4 US qt (6.1 ℓ , 5.4 Imp qt) 7.6 US qt (7.2 ℓ , 6.3 Imp qt) **
Windshield washer reservoir	U.S. Cars	2.6 US qt (2.5 ℓ , 2.2 Imp qt)
	Canada Cars	4.8 US qt (4.5 ℓ , 4.0 Imp qt)

* 1 : Including the coolant in the reserve tank and that remaining in the engine.

Reserve tank capacity: 0.16 US gal (0.6 ℓ , 0.13 Imp gal)

* 2 : Excluding the oil remaining in the engine.

* 3 : 6-cylinder models