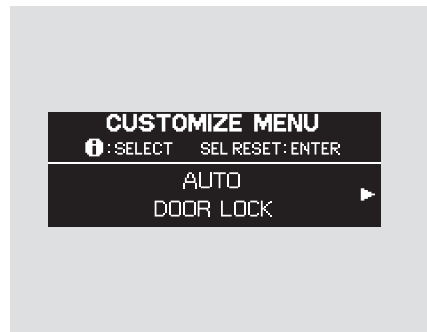


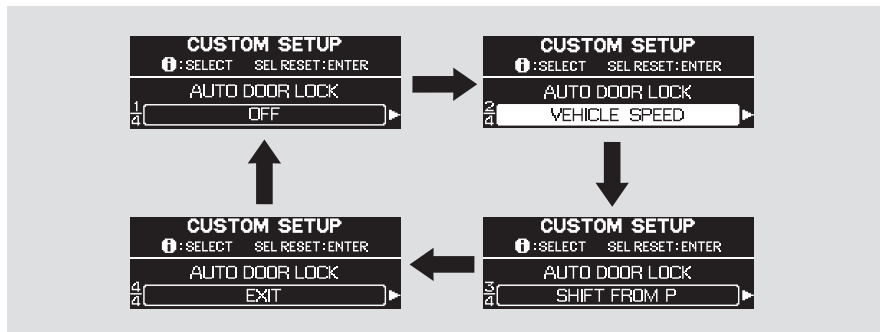
## Multi-Information Display

### Auto Door Lock



To customize the auto door locking feature, do this:

While the multi-information display shows "DOOR-WINDOW SETUP," press the SEL/RESET button on the steering wheel. The display changes to "AUTO DOOR LOCK" as shown above.



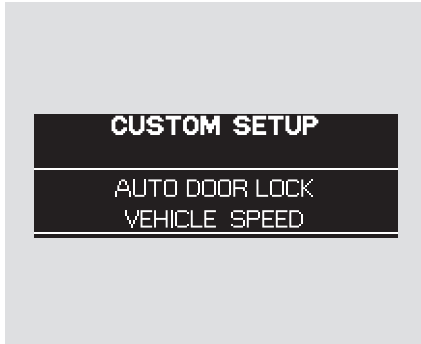
Press the SEL/RESET button. Each time you press the INFO button, the display changes from "OFF," to "VEHICLE SPEED," to "SHIFT FROM P," and then to "EXIT" as shown above.

There are three possible settings:

**OFF:** The auto door lock is deactivated all the time.

**SHIFT FROM P:** The doors lock whenever you move the shift lever out of P.

**VEHICLE SPEED:** The doors lock when the vehicle speed reaches 10 mph (16 km/h).



Press the INFO button repeatedly until the desired condition appears, then press the SEL/RESET button to enter your selection.

When your selection is entered, you will see the above display for several seconds, and then the display goes back to "CUSTOMIZE MENU."



If you fail to enter your selection, you will see the above display for several seconds, and the display goes back to "CUSTOMIZE MENU." Repeat the setup.

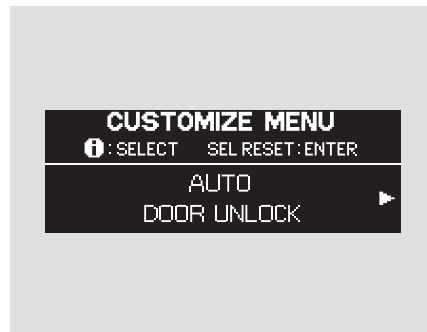


To exit "AUTO DOOR LOCK," press the INFO button until you see "EXIT," then press the SEL/RESET button.

CONTINUED

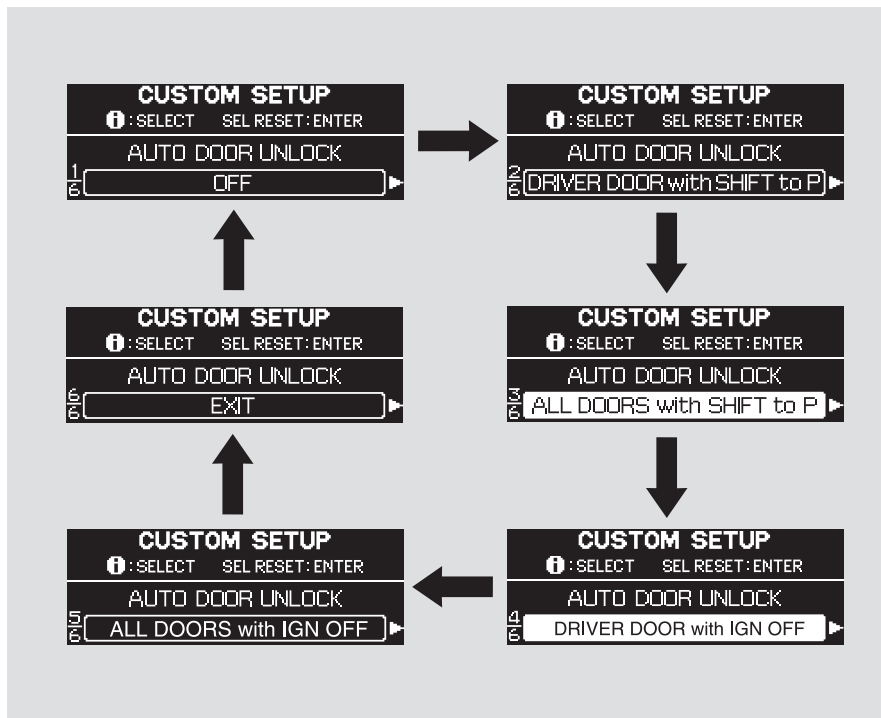
## Multi-Information Display

### Auto Door Unlock



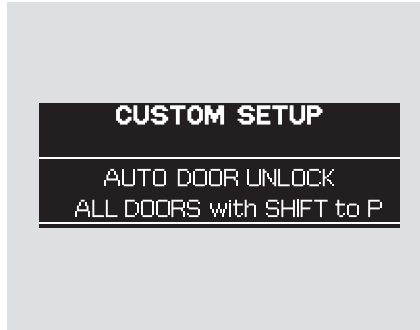
To customize the auto door unlocking feature, do this:

While the multi-information display shows “DOOR-WINDOW SETUP,” press the SEL/RESET button on the steering wheel. Then press the INFO button once. The display changes to “AUTO DOOR UNLOCK” as shown above.



Press the SEL/RESET button again to enter “Auto Door Unlock,” then press the INFO button. Each time you press the INFO button, the display changes from “OFF,” to “DRIVER DOOR with SHIFT to P,” to “ALL DOORS with SHIFT to P,” to “DRIVER DOOR with IGN OFF,” to “ALL DOORS with IGN OFF,” and then to EXIT as shown on the previous page.

- **OFF:** The auto door unlock is deactivated all the time.
- **DRIVER DOOR with SHIFT to P:** The driver’s door unlocks when you move the shift lever to P.
- **ALL DOORS with SHIFT to P:** All doors unlock when you move the shift lever to P.
- **DRIVER DOOR with IGN OFF:** The driver’s door unlocks when you turn the ignition switch to LOCK (0).
- **ALL DOORS with IGN OFF:** All doors unlock when you turn the ignition switch to LOCK (0).



Press the INFO button repeatedly until the desired condition appears, and press the SEL/RESET button to enter your selection.

When your selection is entered, you will see the above display for several seconds, and then the display goes back to “CUSTOMIZE MENU.”



If you fail to enter your selection, you will see the above display for several seconds, and the display goes back to “CUSTOMIZE MENU.” Repeat the setup.

To exit “AUTO DOOR UNLOCK,” press the INFO button until you see “EXIT,” then press the SEL/RESET button.

*CONTINUED*