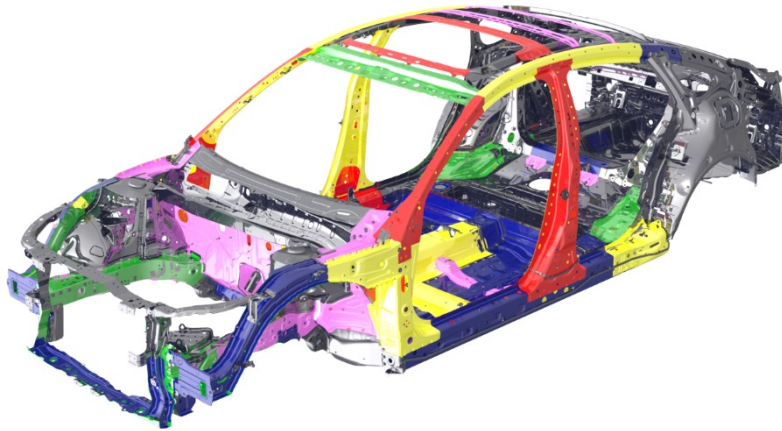


## 2018 Accord Hybrid: Body Repair Information

**DISCLAIMER:** This publication contains a summary of new body and vehicle technology that may affect collision and other body repairs. Always refer to the appropriate service information and body repair manuals (BRM) for complete repair information and precautions regarding the SRS system, driver assist systems, welding and electrical repairs. A subscription may be purchased at: [techinfo.honda.com](http://techinfo.honda.com)

### OVERVIEW OF BODY FEATURES



2018 models have these body features:

- Next-Generation Advanced Compatibility Engineering™ (ACE™) body structure
- Extensive use of high tensile strength steel (64.4%), including **36.5%** in grades 780, 980, and 1,500 MPa
- Roof attached with laser brazing method along both apertures
- Extensive use of impact-resistant adhesive throughout the construction process

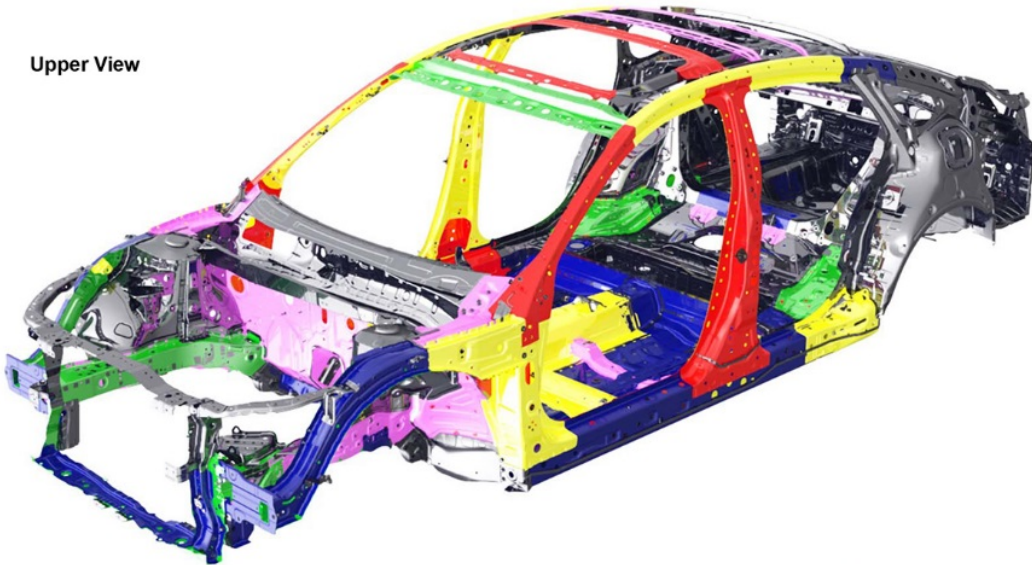
# New Model Body Technology

## BODY CONSTRUCTION AND HIGH STRENGTH STEEL CONTENT

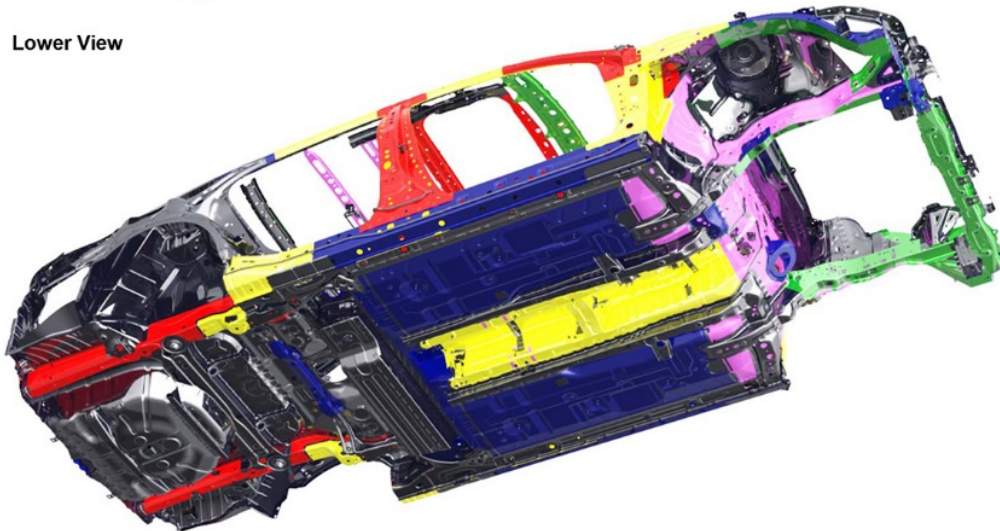
- Steel parts are color-coded based on their tensile strength in megapascals (MPa)
- High strength steel is defined as any steel with a tensile strength of 340 MPa or higher
- Steel repair and welding procedures vary depending on the tensile strength of the parts involved

NOTE: These illustrations are for general reference only. Some body parts, such as the front pillars, are constructed from multiple layers of different tensile strength steels. Always refer to the body repair manual body construction section for specific steel tensile strength information.

Upper View



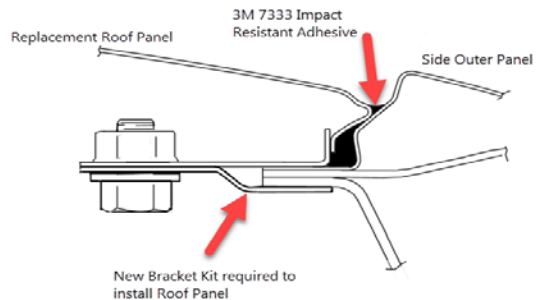
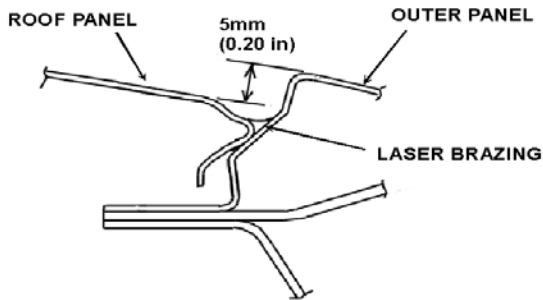
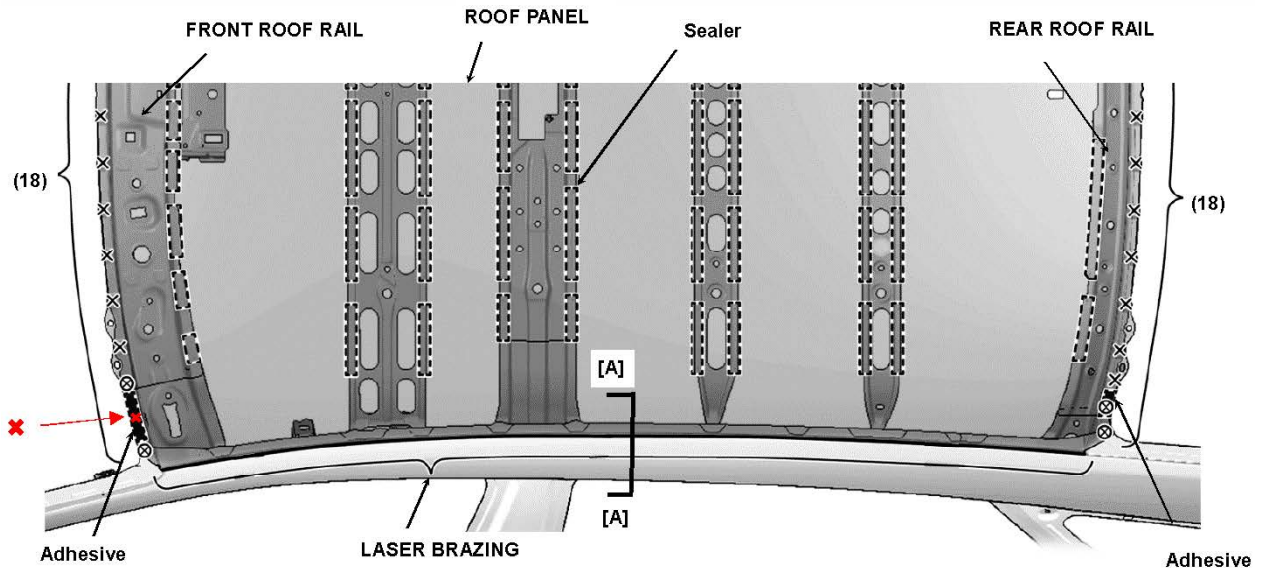
Lower View



## ROOF PANEL ATTACHMENT

The roof on the 2018 Accord Hybrid is attached with weld bonding in the corners as well as laser brazing along both side apertures. Replacement will require adhesive bonding, weld bonding and the purchase of rubber dams and a bracket kit that need to be welded into the apertures so the new roof panel can be bolted to them.

### Roof Panel

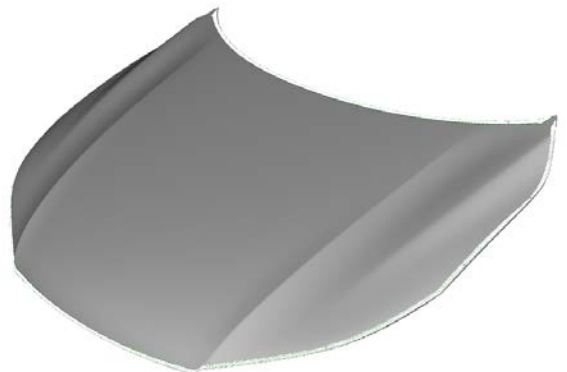


## ALUMINUM PARTS & REPAIRABILITY

The hood on the 2018 Accord Hybrid is constructed from aluminum alloy.

### Repairability Issues

- **Minor damage to the aluminum hood may be** repaired by body shops that have dedicated aluminum repair facilities and tools.
- To prevent galvanic corrosion, some fasteners for aluminum parts are considered one-time use and must be replaced if removed as specified in the service information or body repair manual.



## Side Sill Stiffener and Center Pillar Stiffener

NOTE: Center pillar stiffener is made from ultra high-strength steel (UHSS) (1500 MPa). However, at the [X] area which is shown in the illustration, part is made from high-strength steel (except 1500 MPa). For this reason, sectioning is possible at area [X]. Do not cut except the [X] area.

