

# DST-i

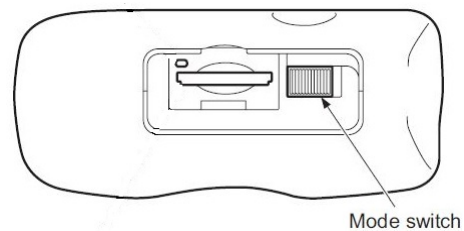
## DST-i Quick Start Guide (For IRF)

This quick start guide is designed as an introduction to the setup and use of the Denso DST-i vehicle communication interface for use with the Honda Diagnostic System (HDS). For additional information not found in this guide, please see the “DST-i Instruction Manual” located under the Diagnostic Tools page on [techinfo.honda.com](http://techinfo.honda.com).

### Setup and Use

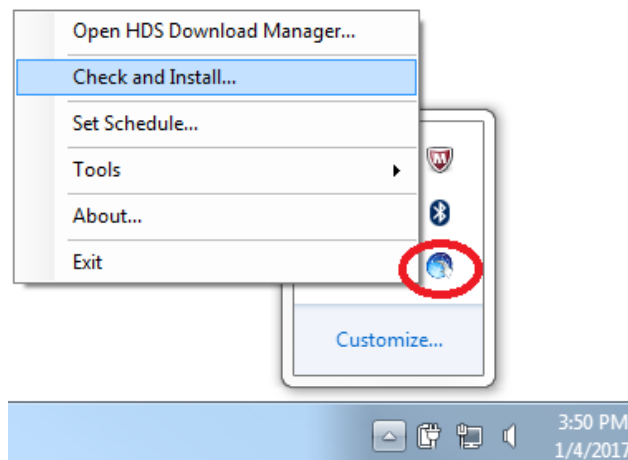
1. Before connecting the DST-i to the PC, ensure that the DST-i PC drivers are installed. The latest drivers can be found at [http://aftermarket.ahmhds.com/DST-i\\_Dist.zip](http://aftermarket.ahmhds.com/DST-i_Dist.zip)

2. The DST-i kit comes with a vehicle DLC cable and a USB cable (along with USB cable retainers). Power on the DST-i using the vehicle DLC or by connecting the USB cable to your HDS PC, and sliding the mode switch of the DST-i to **on**.

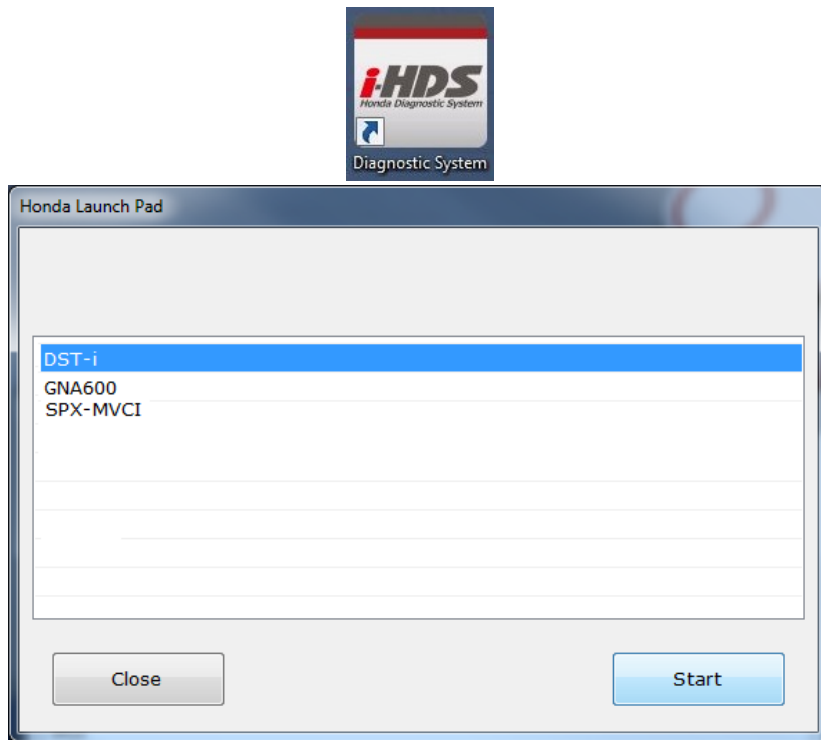


- a. When using a USB connection, the DST-i interface will be ready for use after installation of DST-i drivers to your HDS PC. The Honda Download Manager (HDM) delivers these drivers to the PC.
- b. Additionally, the DST-i has wireless capability. For detailed instructions on how to enable WiFi, reference “WLAN Setup” located under the Diagnostic Tools page on [techinfo.honda.com](http://techinfo.honda.com).

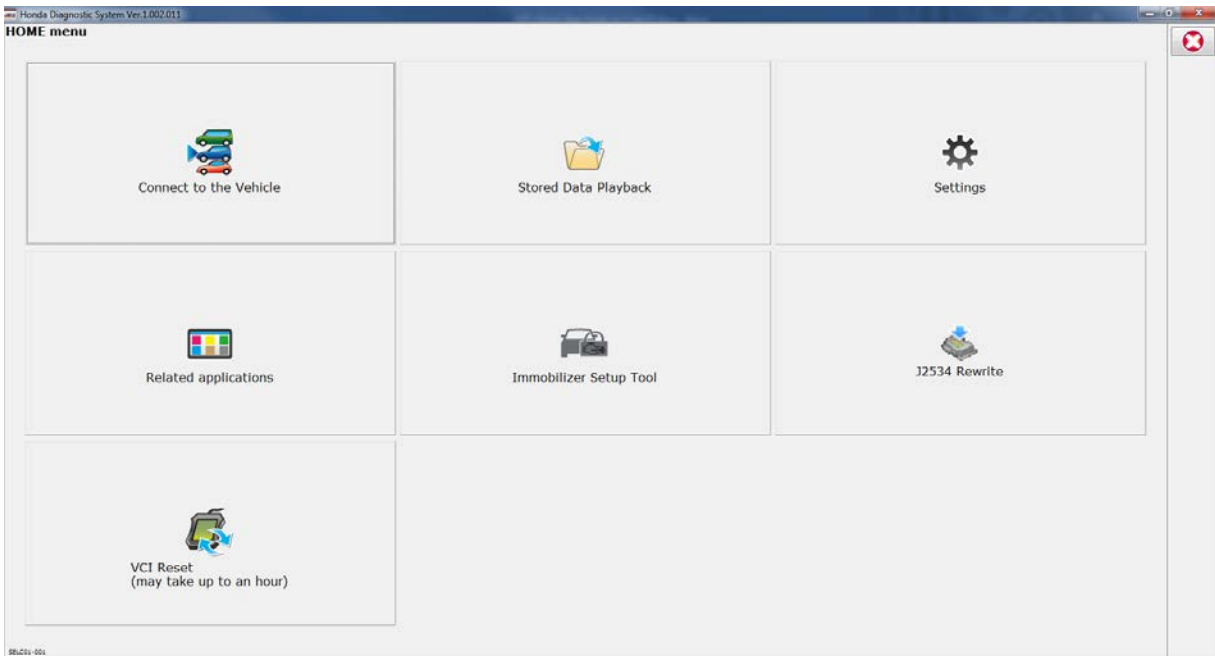
3. Ensure all i-HDS suite software is up-to-date by performing an HDM “Check and Install” by right clicking on the HDM monitor icon and selecting Check and Install.



4. If all i-HDS Suite related software on the PC is up to date, launch the software using Diagnostic System desktop icon and select the DST-i from the Honda Launch Pad.



5. All diagnostic and control module (CM Update) reprogramming functionality will be available from the i-HDS Home Menu.



For DST-i support, contact the HDS/VCI Support Hotline at (877)504-3571 Mon-Fri, 4am-5pm PST.