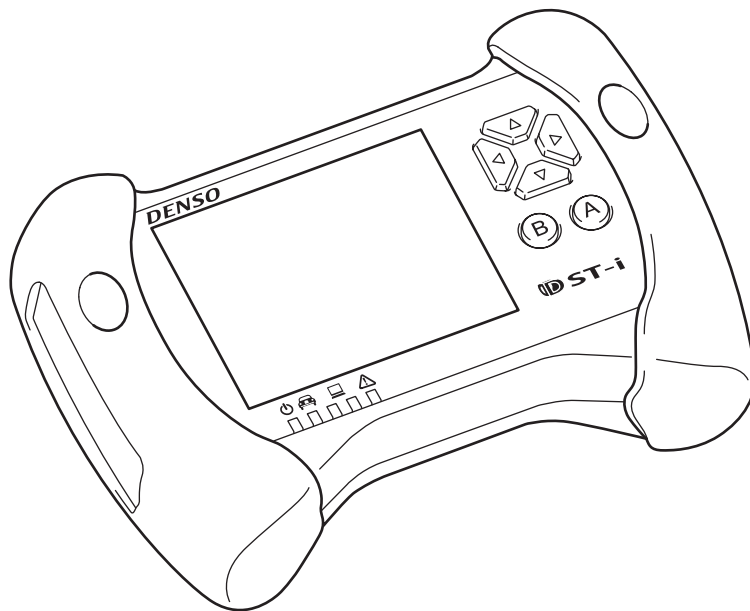




Wireless LAN Connection Set-up Instructions






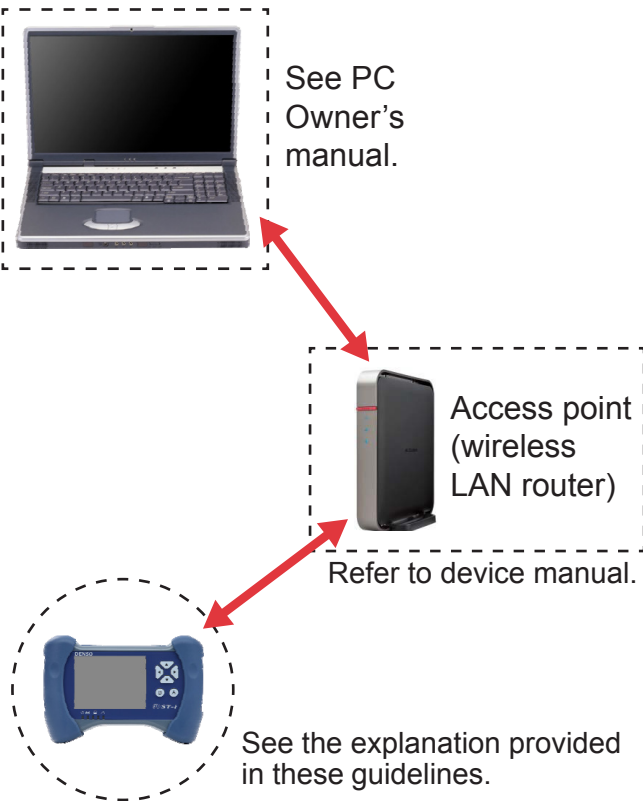


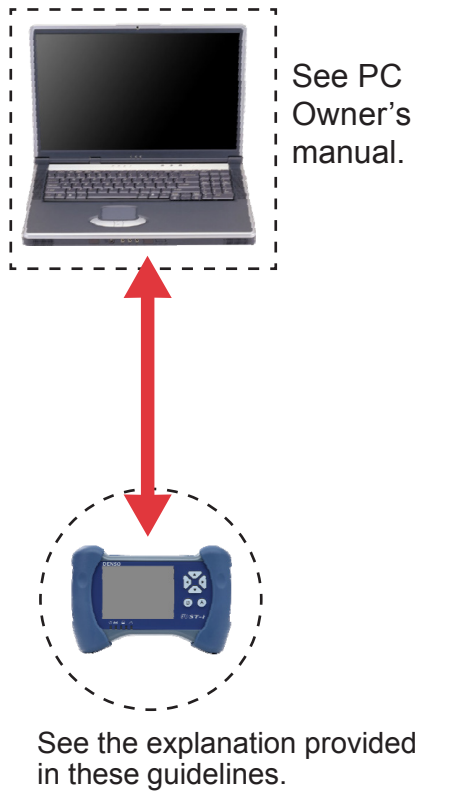


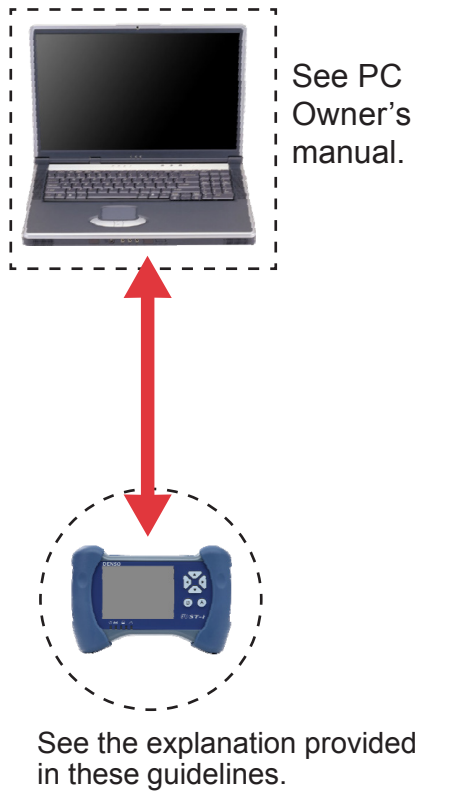
These instructions explain how to execute necessary settings on a PC screen to use the DST-i wirelessly, register the DST-i settings, and connect to wireless LAN (local area network) connection.

To establish a wireless LAN connection, the PC must have a proper wireless LAN adapter installed and configured. Refer to your PC/device manual or consult your IT professional.

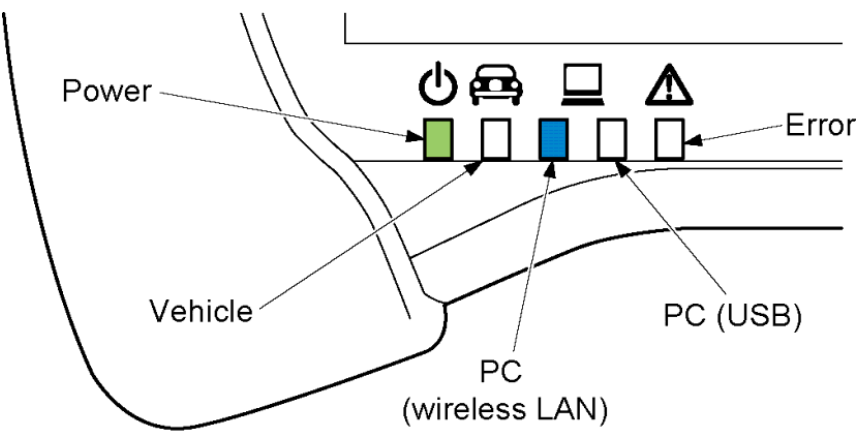
1. Summary

1-1 Using a DST-i wireless LAN connection



In order to establish a wireless network connection, a decision to select either Infrastructure or Adhoc mode will be necessary. DENSO recommends using Infrastructure Mode, however it may require additional equipment (Access Point) if one is not already available. The two types of connection modes are supported as follows:

Infrastructure mode	Adhoc mode
Allows wireless connection between a PC and the DST-i via an access point.	Allows direct wireless connection between a PC and the DST-i.
<div><div><p>See PC Owner's manual.</p></div><div><p>Access point (wireless LAN router) Refer to device manual.</p></div><div><p>See the explanation provided in these guidelines.</p></div><div></div></div> <td><div><div><p>See PC Owner's manual.</p></div><div><p>See the explanation provided in these guidelines.</p></div><div></div></div></td>	<div><div><p>See PC Owner's manual.</p></div><div><p>See the explanation provided in these guidelines.</p></div><div></div></div>

Review the DST-i LED Indicators to confirm proper hardware connection:



Infrastructure mode	Adhoc mode
PC connection (wireless LAN connection) indicator	PC connection (wireless LAN connection) indicator
Just after start: Flashing fast Searching for an access point: Flashing fast After connecting to an access point: Flashing slow	Just after start: Flashing fast Standby for connection: Flashing slow

To Confirm Active Wireless Mode	
DST-i Screen	
NOTE: On the main screen, the notification icon will identify which mode is actively configured.	
Infrastructure mode After connecting to an access point	Adhoc mode Standby for connection
	

1-2 Operating environment

Operating environment

Same as the Honda Diagnostic System (HDS) operating environment
HDS should be installed

Wireless LAN specification supported by the DST-i

IEEE802.11b

IEEE802.11g

IEEE802.11n (2.4GHz bandwidth)

NOTE

5GHz IEEE802.11n and IEEE802.11a cannot be used.

1-3 Usage method

Wireless LAN connection setup



Setting up DST-i wireless LAN connection on a PC.

The “DST-iWiFiSetupWizard” is used to configure the wireless LAN settings on the DST-i through the PC.

CAUTION

The method to set up the wireless LAN adapter, and the setup method to connect a PC to an access point (wireless LAN router) are not described.

NOTE

In order to establish a PC connection through the wireless LAN, you must first configure the settings on the PC to wireless settings on the DST-i. The following procedure must be set up before you are able to connect through wireless LAN.

Flow of operation:

- Recommended Infrastructure Mode parameters (Network Authentication and Data Encryption)
- Recommended Adhoc Mode parameters (Network Authentication, Data Encryption, and Channel)
- Selecting the connection method (Infrastructure or Adhoc)

Infrastructure Mode setup	Adhoc Mode setup
<div>Use the following settings</div> <div>Existing profiles <input type="text"/></div> <div>Network Name (SSID) <input type="text"/></div> <div>Network Authentication <input type="text" value="WPA2-PSK"/></div> <div>Data Encryption <input type="text" value="AES"/></div> <div>Network Key <input type="text"/></div> <div><input type="checkbox"/> Display network key</div> <div><input type="checkbox"/> Obtain an IP address automatically</div> <div>Use the following IP address</div> <div>IP address <input type="text" value="."/></div> <div>Subnet Mask <input type="text" value="."/></div>	<div>Use the following settings</div> <div>Existing profiles <input type="text"/></div> <div>Network Name (SSID) <input type="text"/></div> <div>Network Authentication <input type="text" value="Open"/></div> <div>Data Encryption <input type="text" value="WEP128"/></div> <div>Network Key <input type="text"/></div> <div><input type="checkbox"/> Display network key</div> <div>Channel <input type="text" value="1"/></div>

Contact your system administrator for the remaining setup parameters (i.e. SSID, Network Key, IP address, etc.) as these are defined by individual facilities.

Selecting the connection method (Infrastructure or Adhoc)

Use the following settings

☒ Infrastructure

☐ Adhoc

For the operating method, see “3. Wireless LAN connection setup”.

Vehicle diagnosis by wireless LAN connection

DST-iConnectionManager

The “DST-iConnectionManager” is used to establish proper connection. The connection status can be checked by viewing the DST-i indicator and the screen display. See the “1-1. About using the DST-i wireless LAN connection” for how to check.

The DST-i can be used wirelessly when a vehicle diagnosis is performed in this condition.

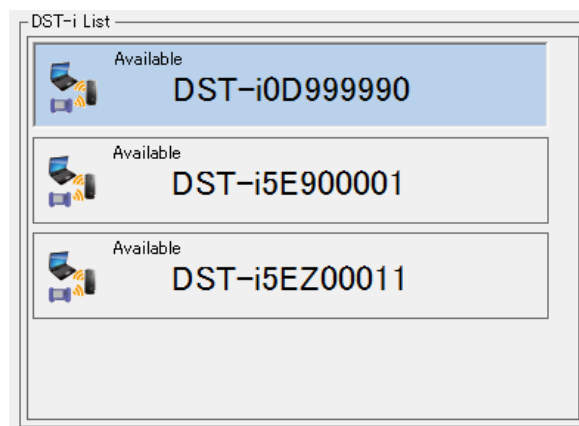
CAUTION

- When using the DST-i wirelessly, it is necessary to keep the dashboard (see the following image of the screen) displayed.
- When connecting the DST-i and a PC with the USB cable, the USB connection is connected.

Flow of operation:

- Searching and selecting the DST-i using the connection manager
- Displaying the dashboard

Searching and selecting the DST-i using the connection manager





Displaying the dashboard



For the operating method, see “4. Vehicle diagnosis by wireless LAN connection”.

DST-i Agent services

 DST-iAgentSelect

 DST-iAgentServiceSetting

Connect the DST-i and a PC either by wireless or USB cable to execute all DST-i Agent functions. There are “DST-i Software Update”, “CM Update History File Retrieving”, “Update of CM Update Calibration File”, etc., as the function.

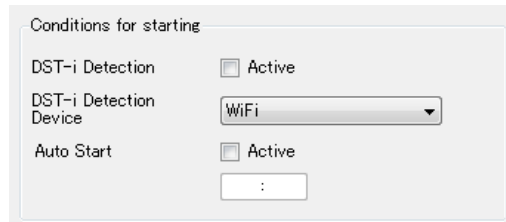
CAUTION

It is necessary to keep the dashboard displayed when using the DST-i wirelessly.

There are two ways to run the DST-i Agent service functions:

1. Auto start and run
2. Manually select the function and run

Auto start and run



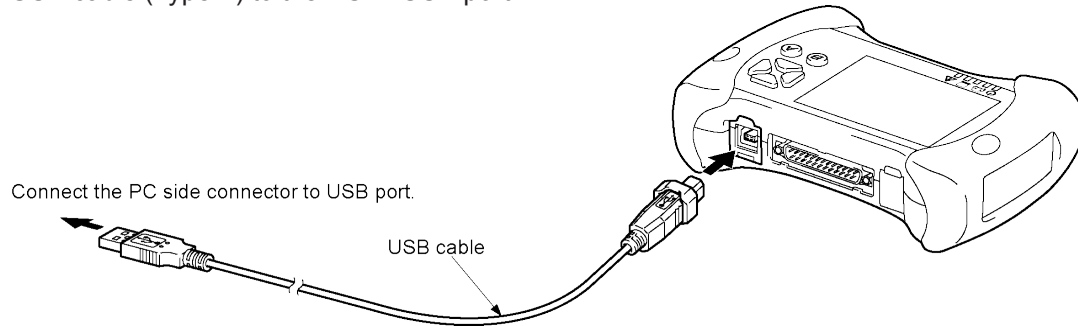
Manually select the function and run



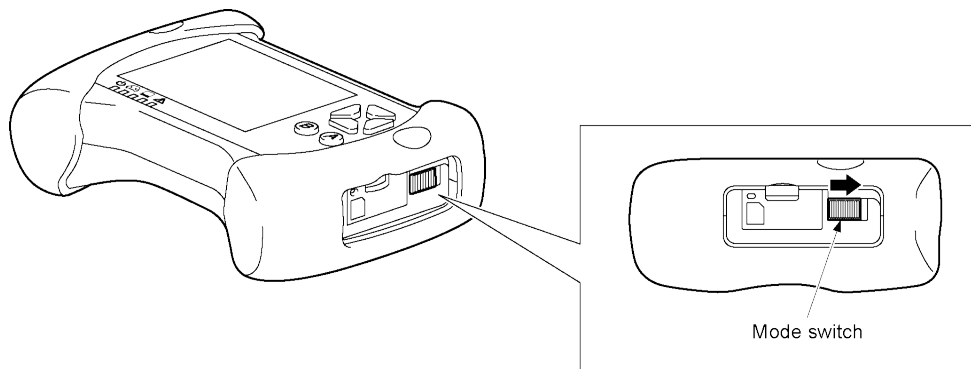
For the operating method, see “5. DST-i Agent services”.

2. DST-i and PC connection

1. Connect the DST-i and the PC by the USB cable and startup the DST-i. To recognize the DST-i, the Windows device set-up may take up to 45 minutes to install.
2. Connect the USB cable (Type A) to the PC USB port.
3. Connect the USB cable (Type B) to the DST-i USB port.



4. Turn the mode switch of the DST-i ON.



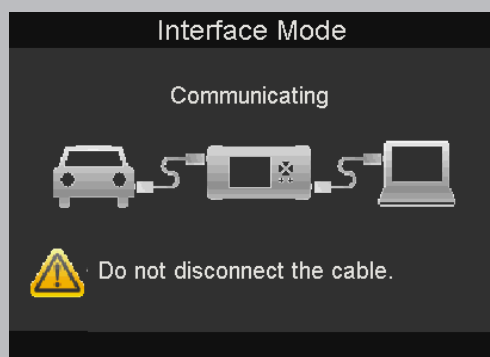
⚠ CAUTION

When first connecting a PC to the DST-i by the USB cable or connecting to a different USB port from previous time, wait until the message of USB driver install appears on the lower right of the PC screen.

5. After the DST-i top screen appears, do not change screens as this may render setup impossible.

⚠ CAUTION

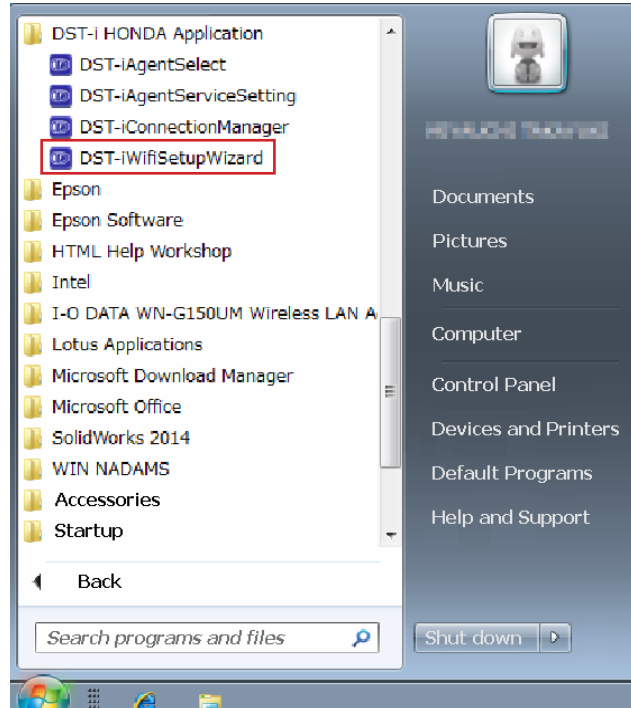
The screen will automatically change and this connection screen is displayed when the DST-i and PC are communicating.



3. Wireless LAN connection setup

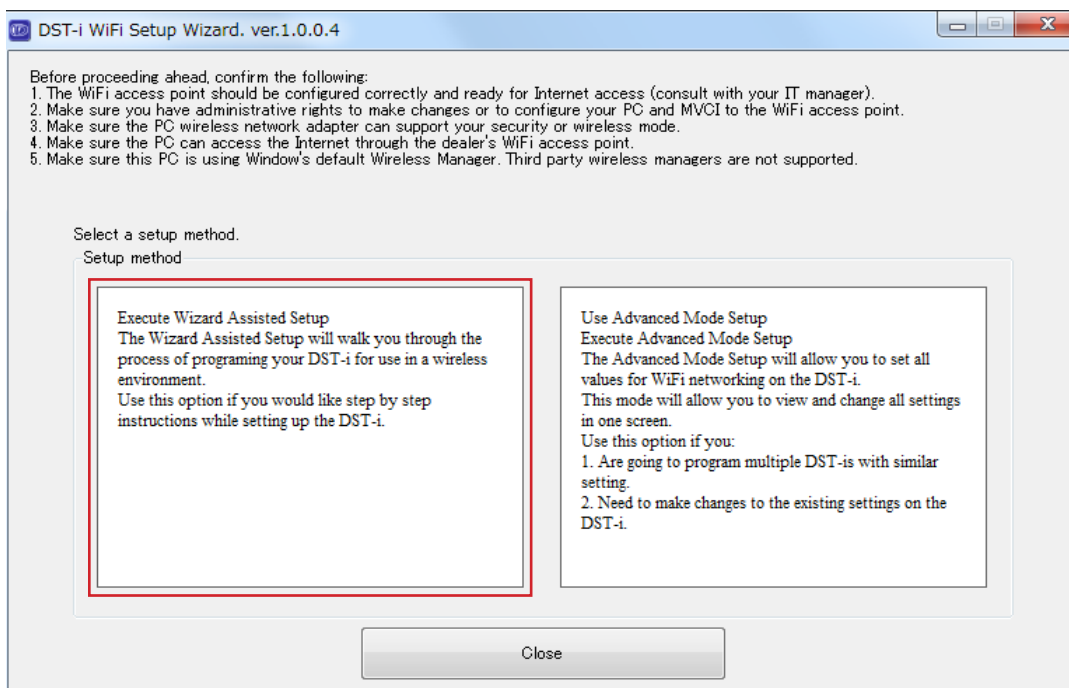
Setting up the DST-i wireless LAN connection on a PC.

1. Launch “DST-iWiFiSetupWizard” from the Startup menu.

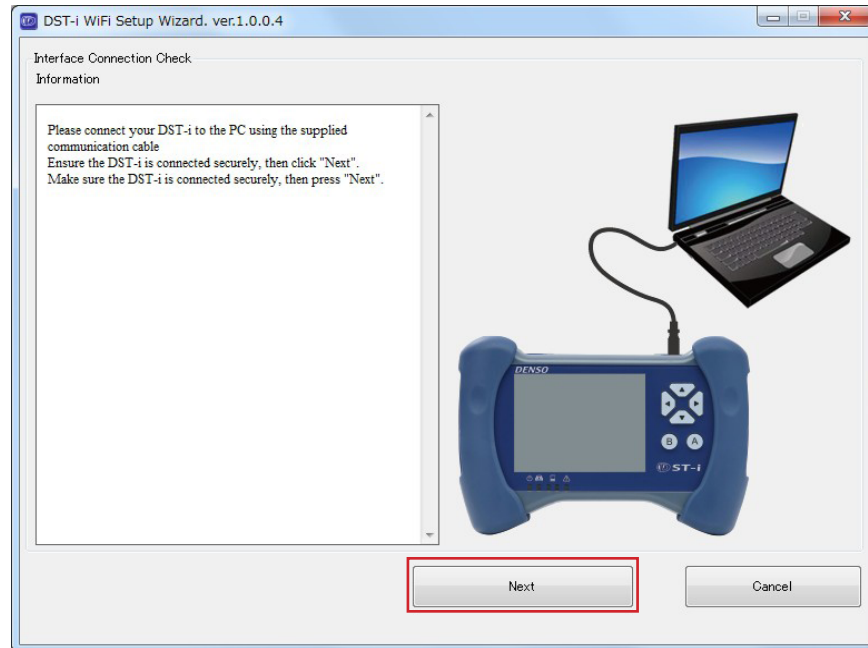


2. Once Setup Wizard has launched, select the setup procedure and click. Select “Wizard Assisted Setup” or “Advanced Mode Setup”.

The following explains what happens when selecting “Wizard Assisted Setup”.

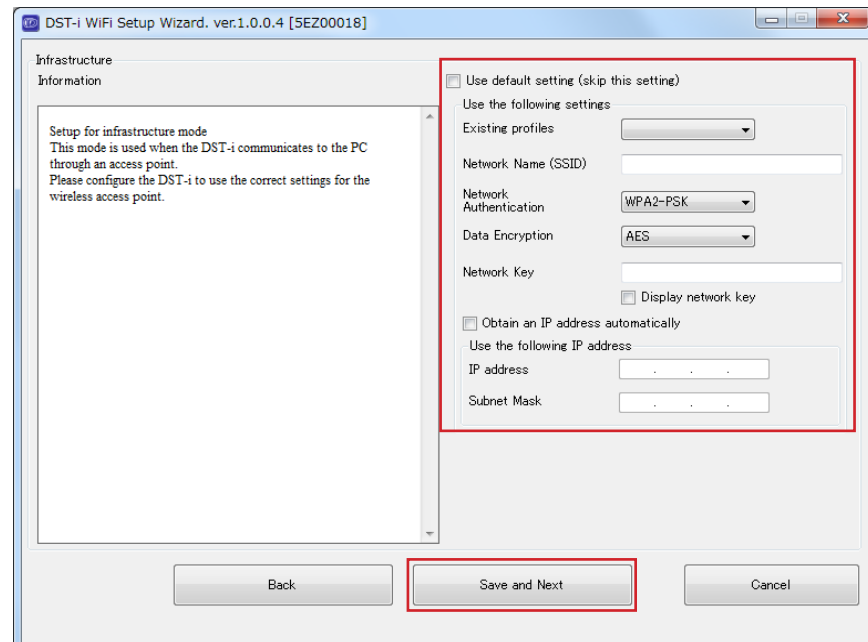


3. Connect the DST-i to the PC by the USB cable.
4. Turn the DST-i mode switch to **ON**.
5. After the DST-i top screen appears, click “Next”.



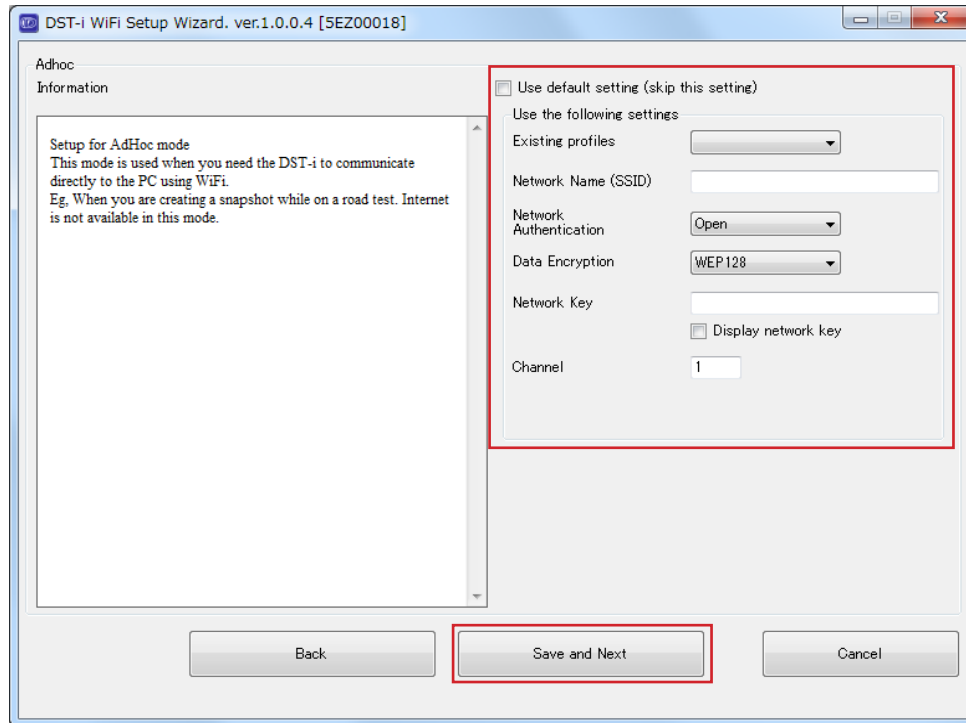
Setup for infrastructure mode

1. Select the setup items from the drop down menu. The following settings will depend on existing IT/Company parameters:
 - a. SSID
 - b. Network Key
 - c. IP Address
 - d. Subnet Mask
2. After setup is complete, click “Save and Next”.

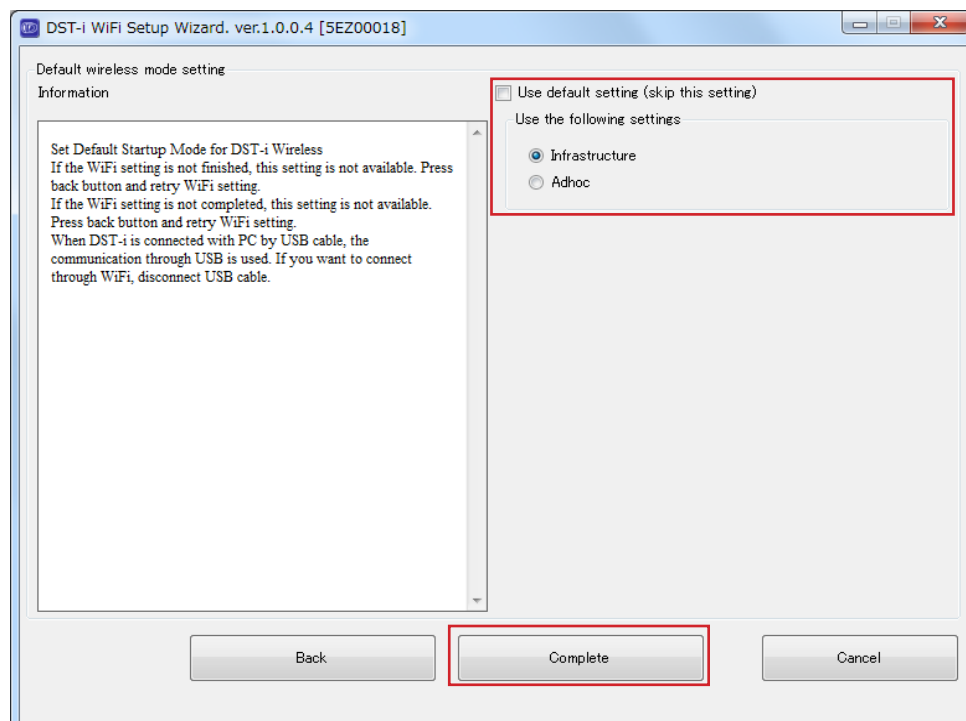


Setup in Adhoc mode

1. Select the setup items from the drop down menu. The following Setting will depend on existing IT/Company parameters
 - a. SSID
 - b. Network Key
 - c. Channel
2. After setup is complete, click “Save and Next”.



Select the default setting (Infrastructure or Adhoc) and click “Complete”.

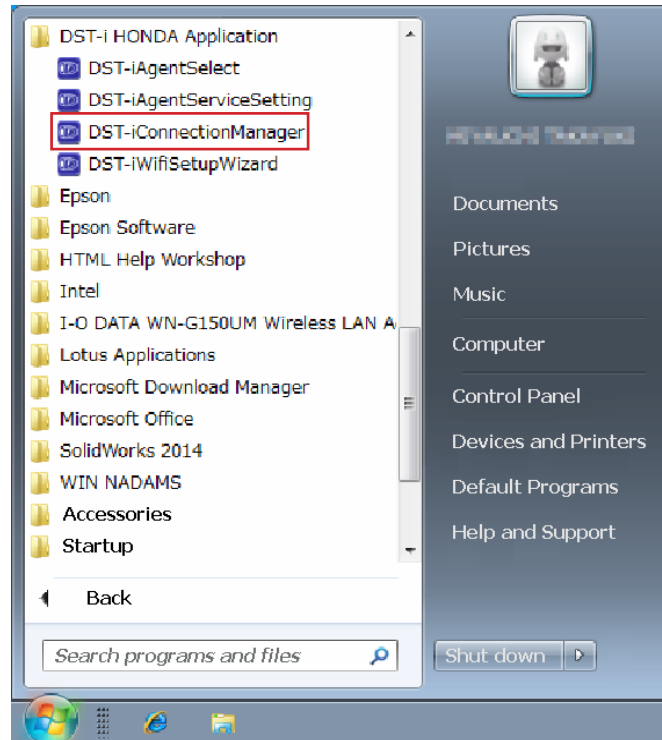


4. Vehicle diagnosis by wireless LAN

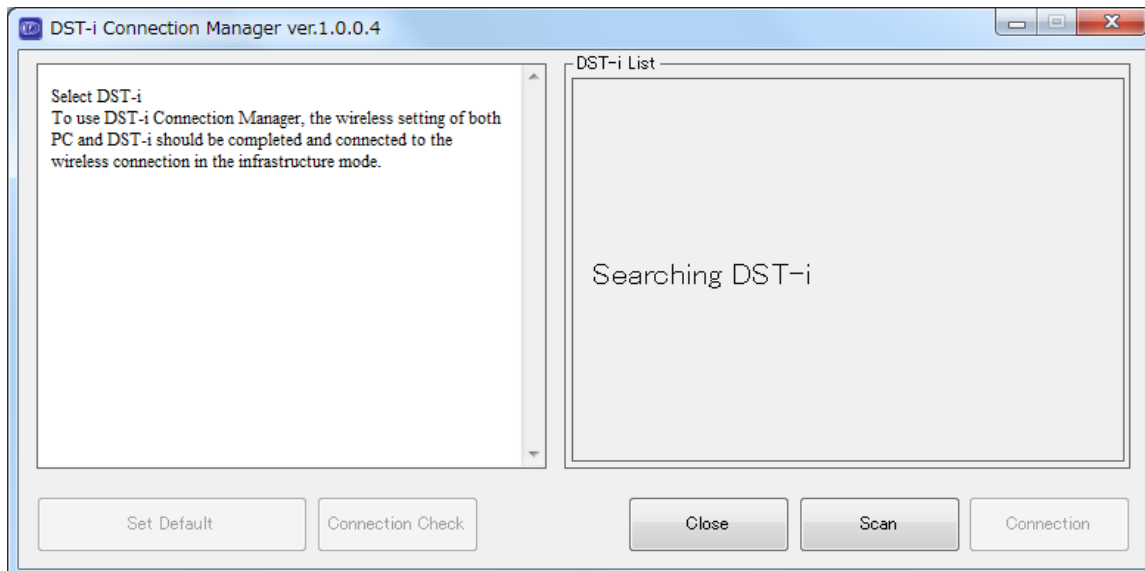
The Connection Manager is used to establish proper connection. The connection status can be checked by viewing the DST-i indicator and the screen display. See “1-1. Using a DST-i wireless LAN connection” for how to check.

The DST-i can be used wirelessly when a vehicle diagnosis is performed in this condition.

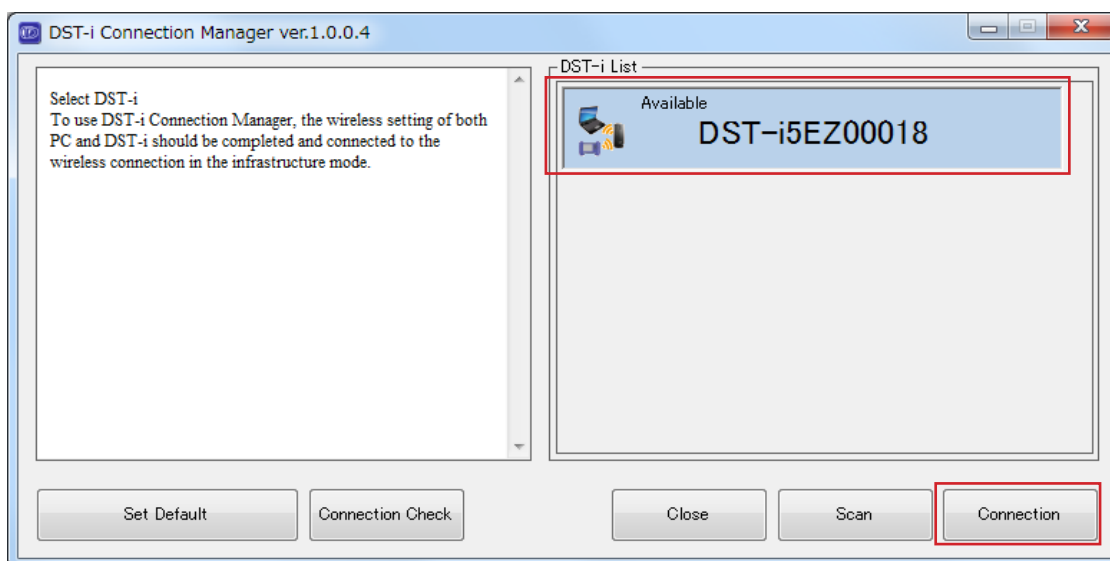
1. Launch “DST-iConnectionManager” from the Startup menu.



2. The Connection Manager launches and DST-i search starts. Wait until the detected DST-i is displayed.



3. After the list of detected DST-i appears, select the DST-i to be connected and click “Connection”.



NOTE

When connecting to the same DST-i again, it will automatically link after detecting the DST-i by clicking “Set Default”.

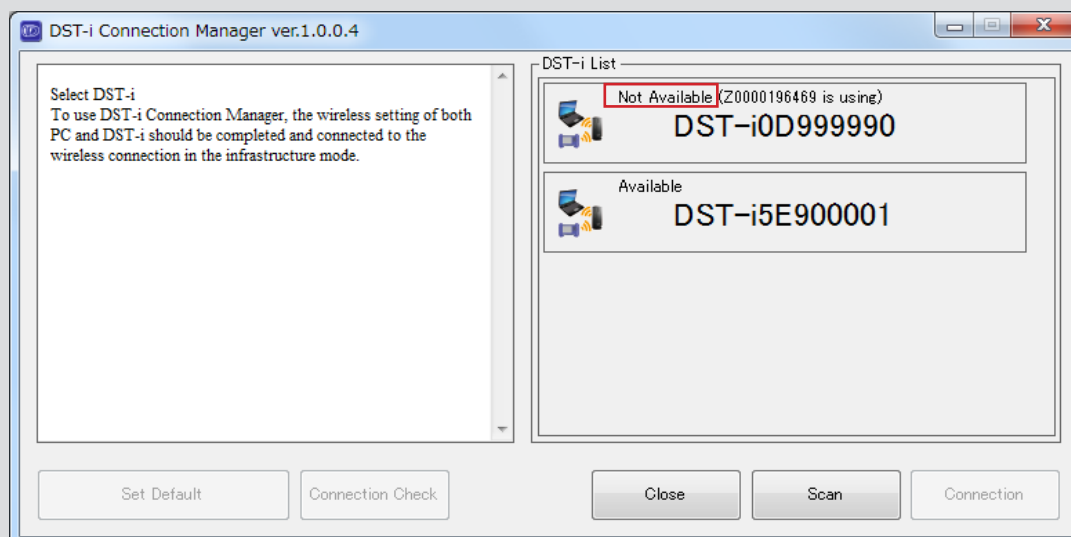
NOTE

- The DST-i serial number appears in the DST-i List.
- To verify the serial number, check the label affixed to the back of the DST-i.

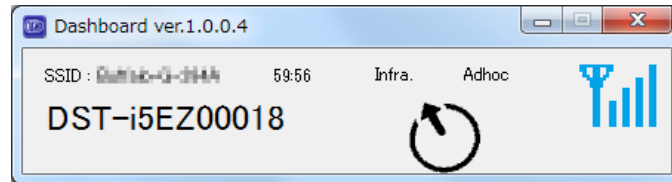


NOTE

If the DST-i device indicated in the DST-i List is connected to another PC, “Not Available” appears.



4. After connection to the DST-i is complete, a notification appears on the dashboard screen.



⚠ CAUTION

It is necessary to keep the dashboard displayed when using the DST-i wirelessly.

5. Start the HDS.

- The DST-i can be used wirelessly when a vehicle diagnosis is performed in this condition.

NOTE

When closing the connection manager and the dashboard screen, please wait approximately 30 seconds to allow the screen to disappear.

5. DST-i Agent services

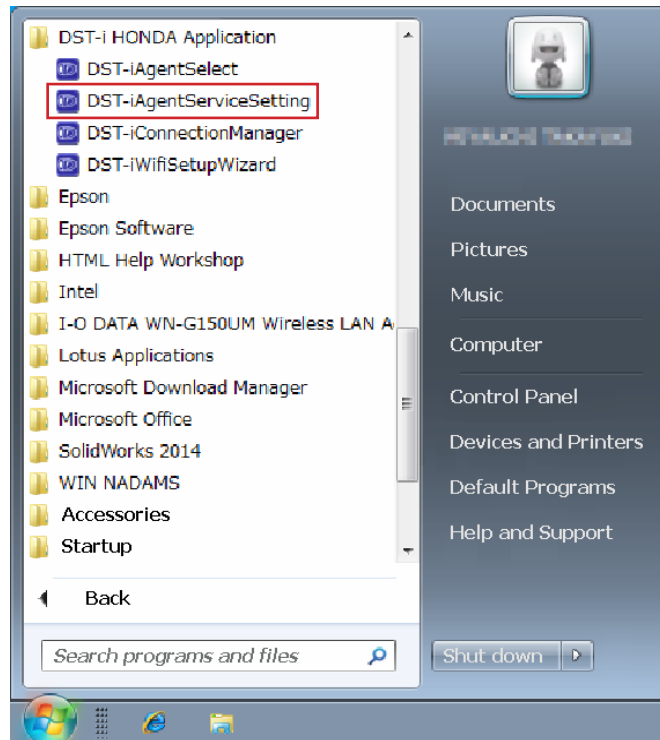
Connect the DST-i to a PC either by wireless or USB cable to execute all DST-i Agent functions. Function examples are “DST-i Software Update”, “CM Update History File Retrieving”, “Update of CM Update Calibration File”, etc.

There are two ways to run the DST-i Agent functions:

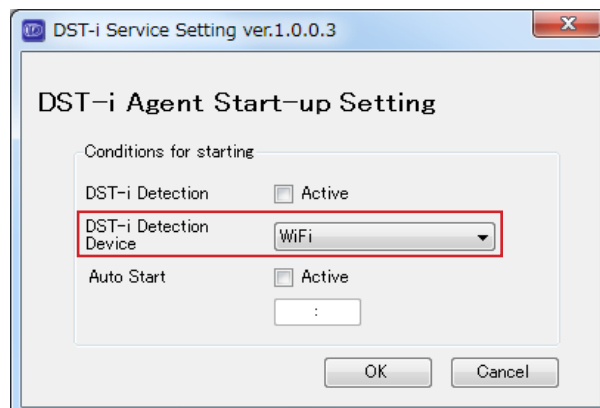
1. Auto start and run
2. Manually select the function and run

5-1. Method to auto start and run

1. Launch “DST-iAgentServiceSetting” from the Start Menu.

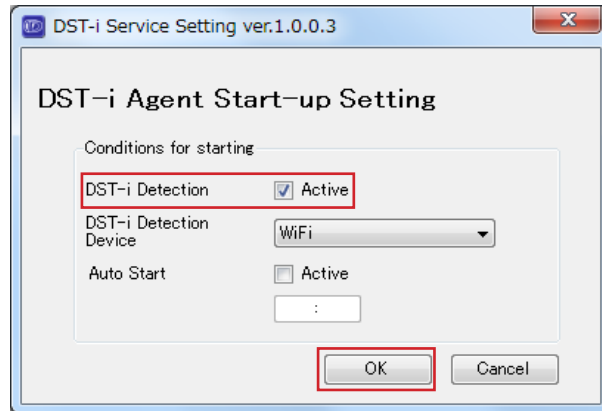


2. The Auto Start setup screen is displayed, so perform the start condition setup.
3. Select the DST-i Detection Device from the drop down menu.



To immediately auto start after the connection with the DST-i is established

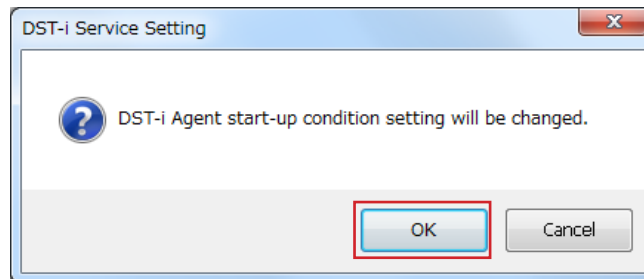
1. Click the “Active” box for DST-i Detection and click “OK”.



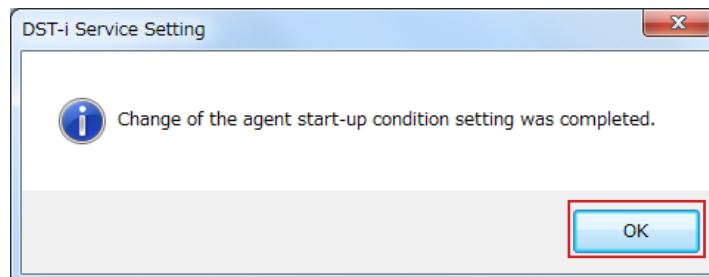
⚠ CAUTION

It is necessary to keep the dashboard displayed when using the DST-i wirelessly.

2. A confirmation screen appears, click “OK”.



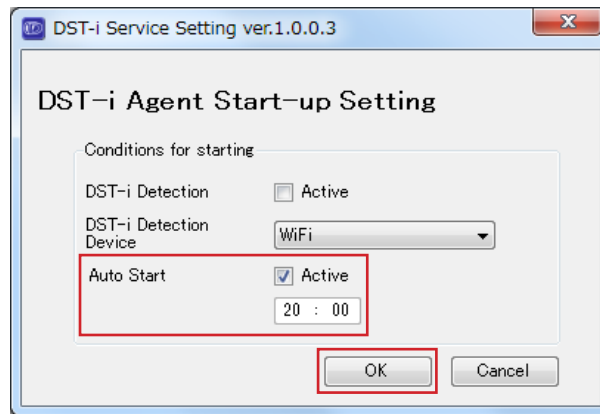
3. A completion screen appears, click “OK”.



4. Once the DST-i is detected and the connection is established, the DST-i Agent service will automatically start and run the program.

To set the time to auto start

1. Click the “Active” box for auto start.
2. Enter the time to auto start and click “OK”.



CAUTION

It is necessary to keep the dashboard displayed when using the DST-i wirelessly.

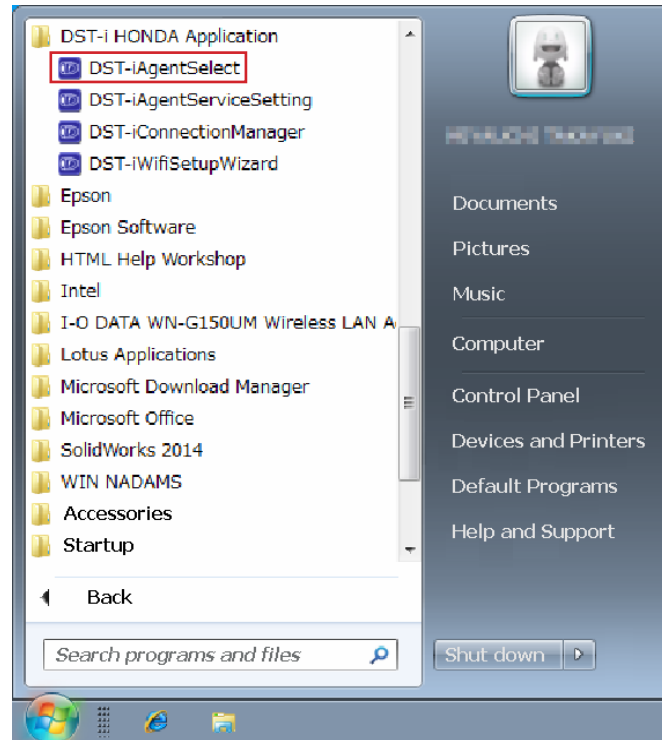
3. When the set time comes, the DST-i Agent service will automatically start and run the program.

NOTE

The program will not run if the DST-i cannot be detected or the connection is not established by the set time.

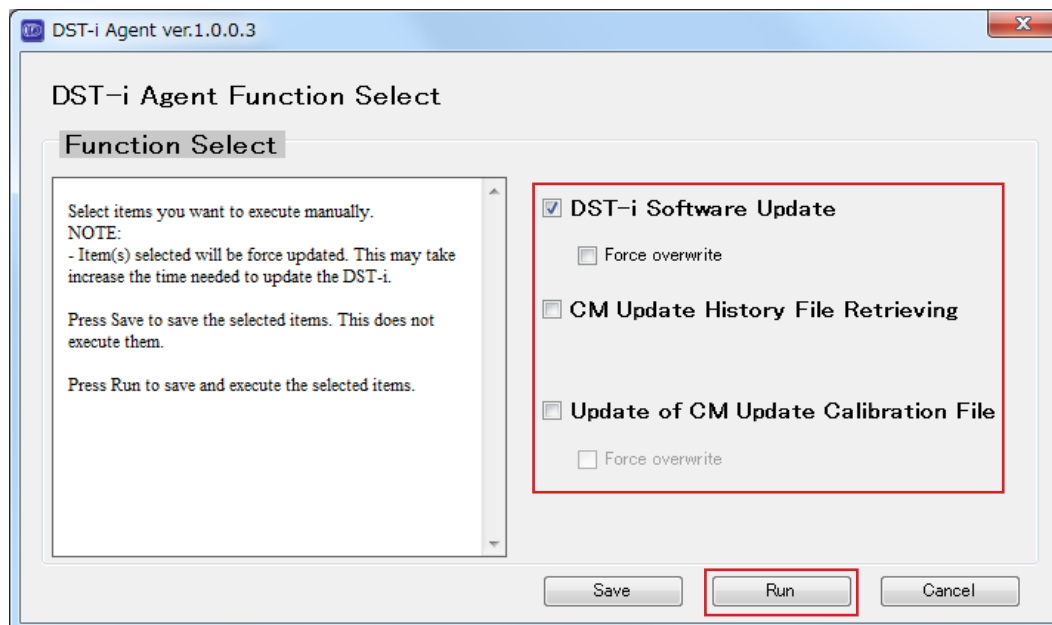
5-2. Method to manually select the function and run

1. Launch “DST-iAgentSelect” from the Start Menu.



2. The manual selection of function to run screen is displayed, allowing you to choose the program selection to run.

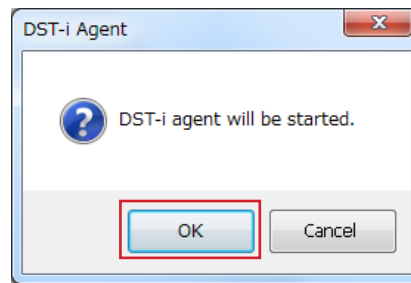
3. Place a check in the box next to the program you wish to run and click “Run”.



NOTE

Selecting “Force overwrite” updates all the data and will take time to complete.

4. A confirmation screen appears, click “OK”.



5. Wait until the chosen program completes.

- When completing correctly, the program automatically ends and the screen closes.

