



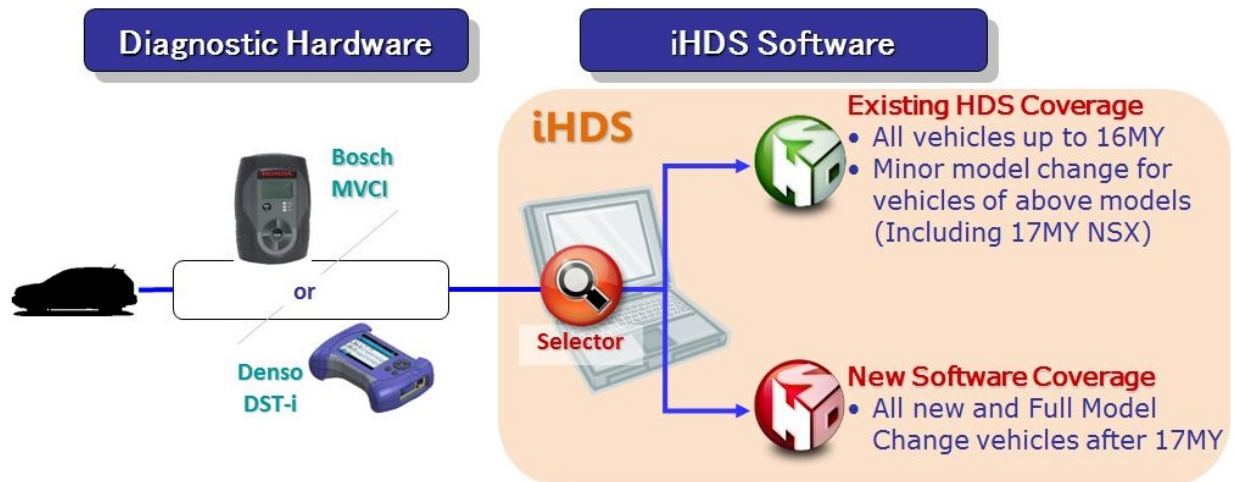
Quick Start Guide

This document may not be fully comprehensive of all features in the i-HDS Suite, but it will give an overview of features to look for all around the i-HDS software Suite. For assistance with i-HDS download and installation related issues, refer to the installation instructions received after your subscription purchase. Always be sure to adhere to the PC Minimum Requirements outlined on Service Express before installing HDM and i-HDS.

Overview:

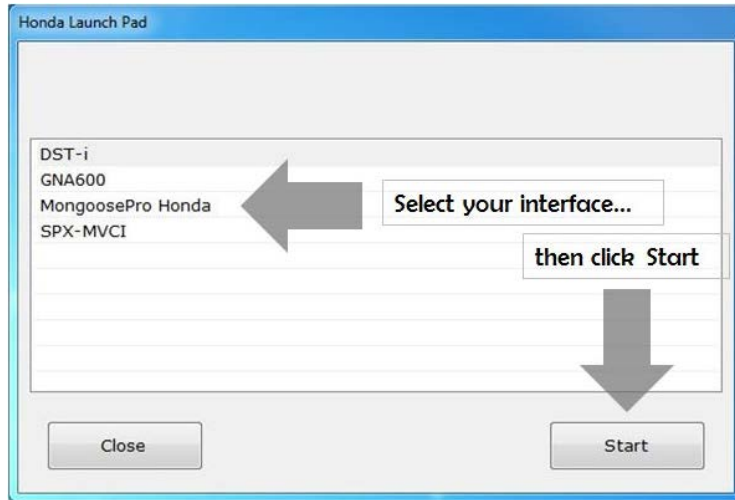
For Hardware, the i-HDS software Suite works with both the DST-i Vehicle Communication Interface (VCI), and the MVCI. For more details on interface device selection, see "Feature 1" below. Please refer to the techinfo.honda.com for more information on these, and other approved VCIs.

For software, HDS or i-HDS is auto-selected depending on the model and model year of the connected vehicle when launching the diagnostic software.



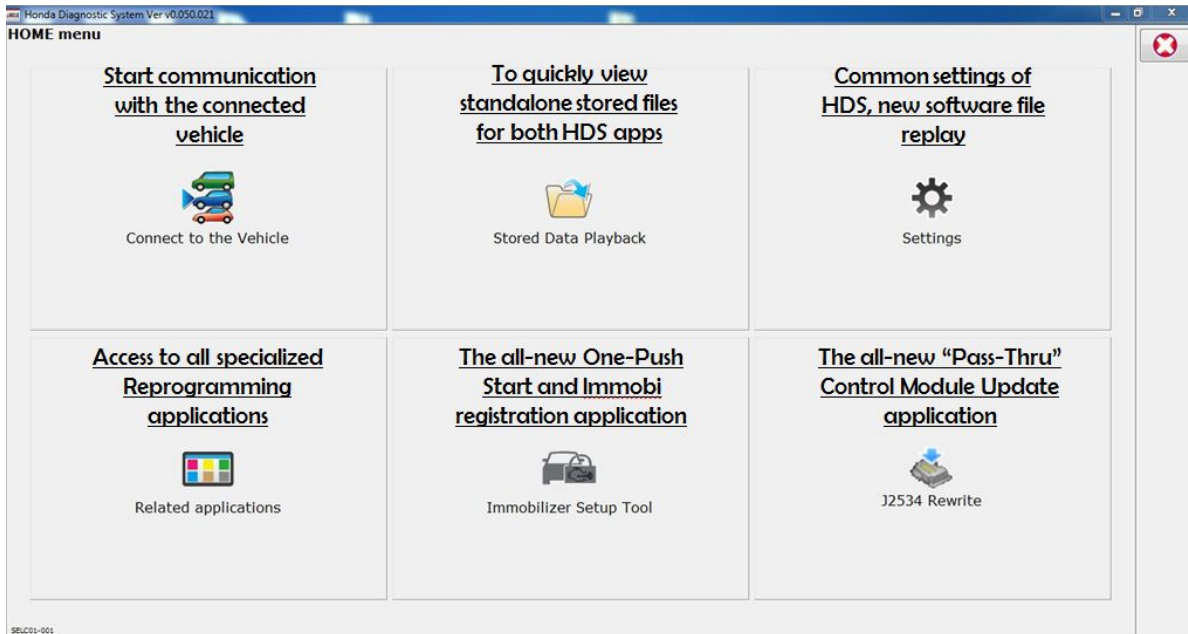
Feature 1 – The Honda Launch Pad

The “Honda Launch Pad” allows the user to select which VCI will be used for the current diagnostic session. This VCI selection propagates to the diagnostic application, the J2534 Rewrite application, and the Immobilizer application.



Feature 2 – Home Menu

The Home Menu is the diagnostic dashboard. This menu is the start screen of the diagnostic software suite. The user can access both HDS and i-HDS software by clicking the “Connect to the Vehicle” button. From there, the software reads the VIN to determine whether to launch HDS or i-HDS.



Features 3 – Applications

Another vital application accessible from the Home Menu is the “J2534 Rewrite” Pass-Thru ECU reprogramming software. Always refer to a Service Bulletin before performing **any** ECU reprogramming.



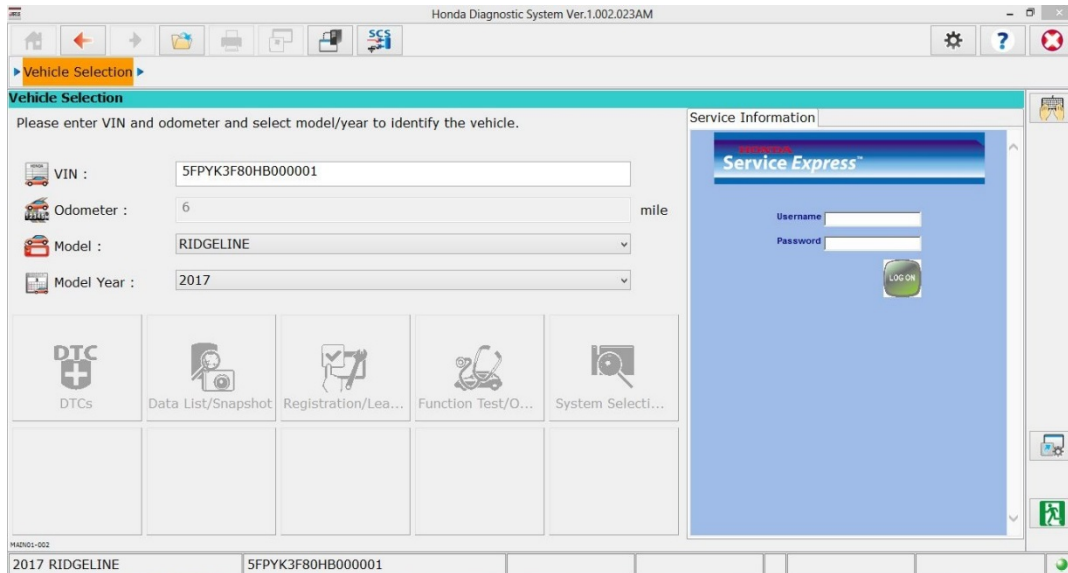
Also accessible from the Home Menu is the “Immobilizer Setup Tool.” All key and remote registration, among other functionality, is available within this application. This application requires that a user purchase a Security Professionals (Locksmith) subscription. Please refer to techinfo.honda.com for additional information.



Features 4 – i-HDS Main Menu & Navigation

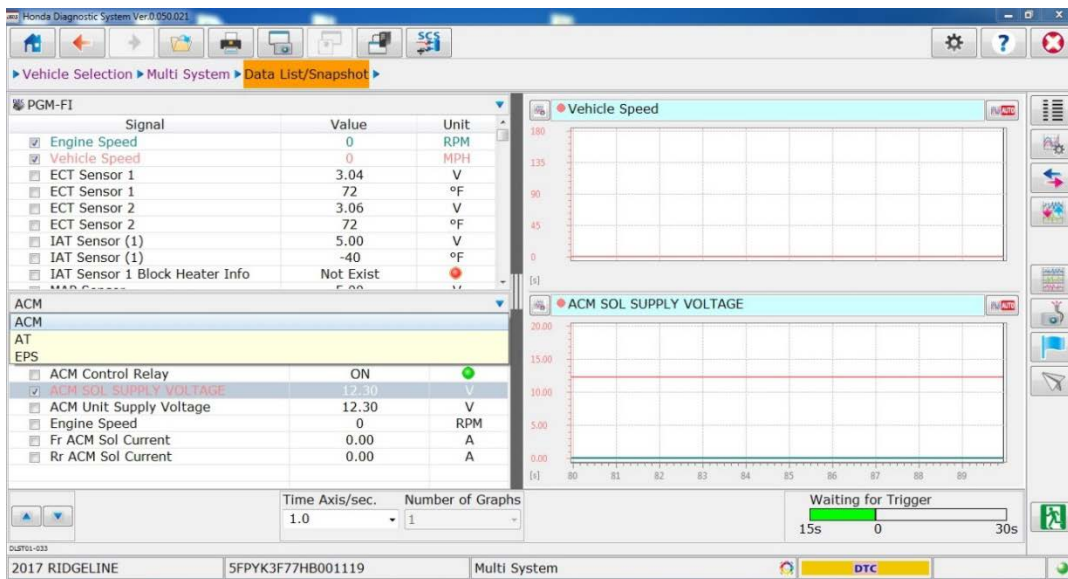
There are a number of useful features on the i-HDS vehicle selection menu. A few are outlined in this document, but feel free to navigate and explore i-HDS to find more.

Note: The i-HDS (and HDS) will lock out if a user has not signed in to Service Express.



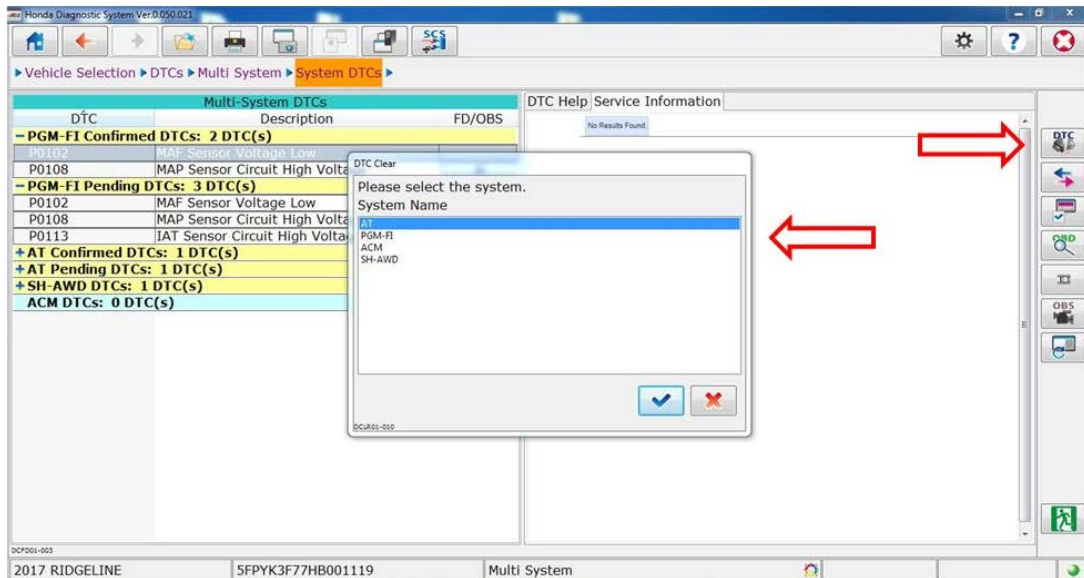
i-HDS Navigation Highlights:

- Fixed top Navigation bar mirrors Windows Explorer operation (Home/Back/Forward)
- DTCs and Data List/Snapshot menu added on top level menu
- Buttons for frequently used Function Test and Adjustment items added
- Legacy style System Select menu, and 5 customizable buttons available
- Hovering over on-screen icons provides an icon description
- The blue question mark icon will provide helpful information on each screen



Highlights:

- System Selection menu is color-coded to assist in locating accessible systems on vehicle
- Multiple systems can be selected and viewed at the same time for the DTC monitor, Data List, and Snapshot (CAN systems support multi-system diagnosis)
- Small blue arrows usually mean there is drop down menu available
- Linegraphs can be viewed across multiple systems at the same time
- Units can be changed in the Data List page by clicking on the unit
- The size of the Data List window is adjustable by dragging the divider
- Snapshot pre-trigger begins automatically upon entering a Data List



- All DTC Check speed is down to about 20 seconds (a 90% improvement)
- Systems with stored DTCs are displayed at the top of the DTC list
- Readiness Monitors and OBD Status are located on the All DTC Check Screen
- Easy access to Freeze Data and On-Board Snapshot (FD/OBS) from the DTC monitor
- DTC Clear button for simplified code clearing from multi-system DTC monitor

Troubleshooting:

For download and installation issues, refer to documentation available on techinfo.honda.com. Always be sure to adhere to the Minimum Requirements outlined on Service Express before installing HDM and i-HDS. If needed, contact the Honda i-HDS, MVCI, and DST-i support hotline for specialized technical assistance: (877)504-3571.